

# ABF 2020 Admitted Patient Price List

---

**DRG Prices  
for  
Inpatients  
and  
Daycases  
2020**

---



Building a  
Better Health  
Service

Seirbhís Sláinte  
Níos Fearr  
á Forbairt

The information contained in this document is intended for the use of the individual or organisation to whom it is addressed, and should not be copied, distributed or quoted without the prior permission of the Healthcare Pricing Office (HPO) of the Health Services Executive (HSE).

## Table of Content

<b>Introduction</b>		<b>ii</b>
<b>Diagnosis Related Groups</b>		<b>iii</b>
<b>Weighted Units, Base Price and Relative Values</b>		<b>v</b>
<b>Flow Chart for Applying the ABF Price List</b>		<b>vi</b>
<b>Pseudocode for Applying the ABF Price List</b>		<b>vii</b>
<b>Important Notes on Using the Price List</b>		<b>x</b>
	<b>Inpatients</b>	<b>Daycases</b>
<b>UNRELATED OR DRGS</b>	1	23
<b>ERROR DRGs</b>	1	23
<b>PRE-MDC</b>	1	23
<b>MDC 1</b> D&D of the Nervous System	1	23
<b>MDC 2</b> D&D of the Eye	3	24
<b>MDC 3</b> D&D of the Ear, Nose & Throat	4	25
<b>MDC 4</b> D&D of the Respiratory System	4	26
<b>MDC 5</b> D&D of the Circulatory System	6	27
<b>MDC 6</b> D&D of the Digestive System	8	28
<b>MDC 7</b> D&D of the Hepatobiliary System & Pancreas	9	29
<b>MDC 8</b> D&D of the Musculoskeletal System & Connective Tissue	10	30
<b>MDC 9</b> D&D of the Skin, Subcutaneous Tissue & Breast	12	31
<b>MDC 10</b> Endocrine, Nutritional & Metabolic D&D	13	32
<b>MDC 11</b> D&D of the Kidney & Urinary Tract	14	33
<b>MDC 12</b> D&D of the Male Reproductive System	15	33
<b>MDC 13</b> D&D of the Female Reproductive System	16	34
<b>MDC 14</b> Pregnancy, Childbirth & Puerperium	16	34
<b>MDC 15</b> Newborns & other Neonates	17	35
<b>MDC 16</b> D&D of the Blood & Blood Forming Organs & Immunological Disorders	18	35
<b>MDC 17</b> Neoplastic Disorders (Haematological and Solid Neoplasms)	18	35
<b>MDC 18</b> Infectious & Parasitic Diseases	18	36
<b>MDC 19</b> Mental D&D	19	36
<b>MDC 20</b> Alcohol/Drug Use & Alcohol/Drug Induced Organic Mental Disorders	19	36
<b>MDC 21</b> Injuries, Poisonings & Toxic Effects of Drugs	20	36
<b>MDC 22</b> Burns	20	37
<b>MDC 23</b> Factors influencing health status & other contacts with health services	21	37

<sup>1</sup> D&D refers to Diseases and Disorders

## Introduction

The introduction of Activity Based Funding (ABF) in January 2016 represented a significant change to the way in which budgets are allocated to acute hospitals in Ireland and to the role of Diagnosis Related Groups (DRGs) and Casemix methodologies in determining those budgets. The move to ABF was a move from a block granted funding system with Casemix adjustments applied for efficiency to a system whereby Casemix methodologies are used to fund hospitals based on the activity they carry out.

This ABF 2020 Price List details the prices that hospitals will be paid for inpatient and daycase activity carried out in 2020 based on the DRG assignment and length of stay (LOS) of each treated patient.

Activity in Outpatient Departments (OPD) and Emergency Departments (ED) are currently not within the scope of ABF and are therefore not included in this document.

## Diagnosis Related Groups

Diagnosis Related Groups are a means of classifying patient hospital encounters into a manageable number of groups which can be used to describe the mix of cases or Casemix of the activity being carried out by a hospital. The DRGs are designed to group cases which are clinically similar and which are expected to consume a similar amount of resources. DRGs and Casemix systems are widely used internationally to manage and fund healthcare systems as well as for performance and quality monitoring.

Currently Ireland is using version 8.0 of the Australian Refined DRG system (AR-DRG v8.0) and the prices contained in this document are intended for use with data grouped using that classification.

The AR-DRG classification has a hierarchical structure. The topmost level is the Major Diagnostic Category (MDC) which categorises cases roughly along body system lines. Within MDC, cases are further partitioned into surgical, medical and other categories depending on whether the case involved an operating room (OR) procedure, a non-OR procedure or neither an OR nor a Non-OR procedure. Within these partitions, cases are assigned to Adjacent DRGs (ADRGs) which contain a number of DRGs which are generally defined by the same diagnosis or procedure lists. The DRG is the lowest level in the classification and it splits out ADRGs by differing complexity levels. Here complexity is an indication of the resource consumption associated with the cases in a DRG and may not correspond to a clinical interpretation of the complexity of a case.

There are 406 ADRGs and 807 DRGs within the AR-DRG classification system. 85 of the ADRGs have no further split by complexity level while the remaining 321 ADRGs are split by complexity to make up 722 DRGs.

The DRGs are identified by a 4 character code followed by a description of the DRGs content. The first character in the code is alphabetic and refers to the MDC that the DRG belongs to. The second and third characters are numeric and they identify both the partition and the ADRG to which the DRG belongs. The fourth character identifies the complexity level associated with the DRG.

Partitions are identified in the DRG code as follows:

- DRGs numbered 01-39 indicate that they are surgical
- DRGs numbered 40-57 indicate that they are “other”
- DRGs numbered 60-99 indicate that they are medical

Complexity levels are identified as A, B, C, D or Z where A indicates the DRG with the highest complexity level, D the DRG with the lowest complexity level and Z indicates that there is no complexity split within the ADRG. Not all ADRGs will contain DRGs corresponding to all 4 complexity levels. The precise meaning of the complexity level is specific to each ADRG and is given in the DRG description.

## Example of DRG Code Structure, I04B Knee replacement, minc

I04B Knee replacement, minc

I indicates MDC 08 Diseases and disorders of the musculoskeletal system and connective tissue

04 is the ADRG number and indicates that this is a surgical DRG

B indicates a case of minor complexity

Throughout the AR-DRG system several abbreviations are used to indicate the level of severity and/or complications associated with a particular DRG. These are listed below.

+/-	With/Without
EXTC	Extreme Complexity
MAJC	Major Complexity
INTC	Intermediate Complexity
MINC	Minor Complexity

## Weighted Units, Base Price and Relative Values

The generic currency of the ABF system is referred to as the Weighted Unit (WU). The WU is a relative measure of the resource consumption of cases in an ABF system and is set so that the average resource consumption or WU level across all cases to be funded is 1. In this way cases which consume more resources than average have a WU value greater than 1 and those which consume fewer resources than average have a WU value less than 1.

Associated with the notion of a WU is the concept of a base price. The base price is the monetary value associated with 1 WU and is therefore the average value per case across all cases to be funded. The monetary value of any case can be calculated by multiplying its WU value by the base price.

As inpatients and day cases are treated separately in the modelling process there is a separate base price calculated for each of these patient types. As the base price is the value of 1 WU it follows that the definition of a WU for inpatients is not the same as that for day cases and the two cannot be directly combined. To obtain the price to be paid for both inpatients and daycases the RVs (see definition below) specific to each setting must be applied to derive the WU value and the base price for each patient type must then be applied to derive the individual prices. Only at this point can the two be combined to get an overall total.

The DRG prices presented in this document are given in terms of relative values (RVs). Relative values express the prices of the various payments for each DRG in terms of WUs. The RVs are used to determine the total WU value for a case and hence the price to be paid for that case.

Most DRGs will have a separate RV quoted for:

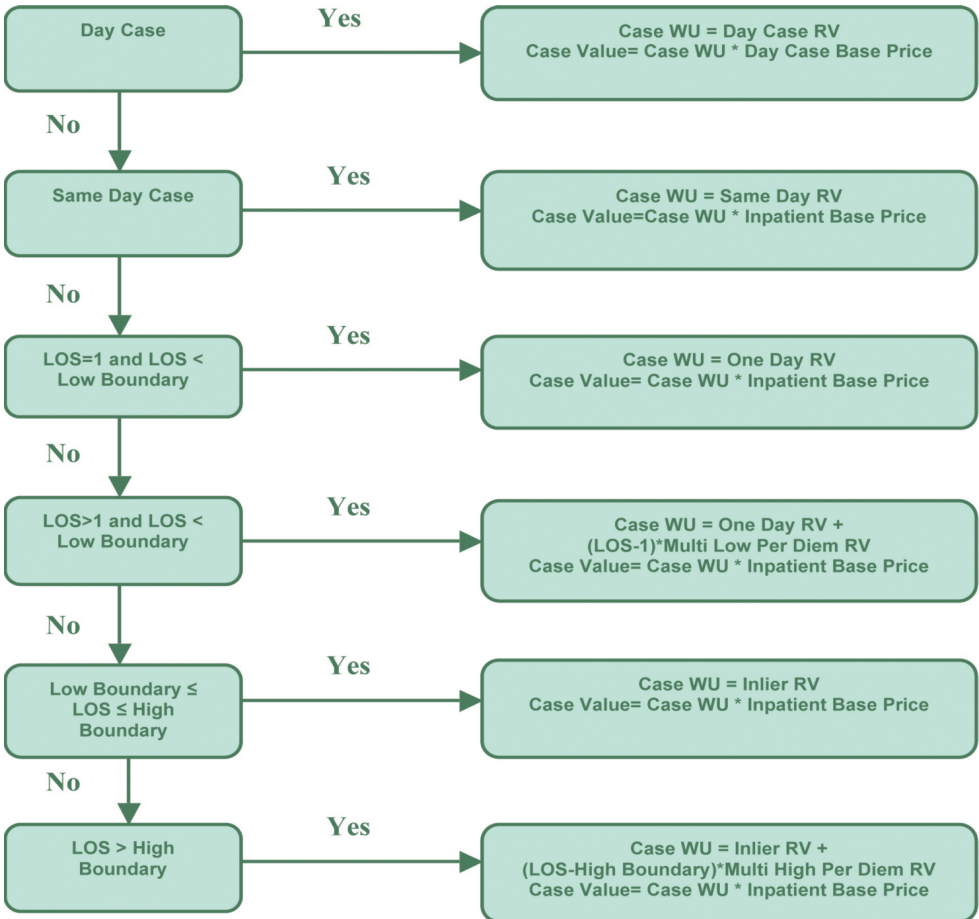
- Daycases
- Sameday Cases
- One Day Cases
- Low Outlier Per Diem
- Inlier Cases
- High Outlier Per Diem

The inpatient base price for 2020 is €5,107 and the daycase base price for 2020 is €770.

The relative values and prices presented in this document are applicable to the entire episode of care from admission to an inpatient or daycase bed to discharge from hospital. They cannot be used to infer either a cost or price for the treatment of a particular diagnosis, or the provision of a particular intervention or procedure in isolation of the entire episode of care. The HPO does not provide pricing information for individual diagnoses, interventions or procedures.

## Flow Chart for Applying the ABF Price List

The flow chart below describes how to correctly implement the ABF 2020 Price List.



### Notes:

1. Daycases are identified using HIPE question 16 - Was this a daycase? *(A day case is a patient who is admitted to hospital on an elective basis for care and/or treatment which does not require the use of a hospital bed overnight and who is discharged as scheduled).*
2. Length of stay is calculated as date of discharge - date of admission. The length of stay for cases admitted and discharged on the same day is set to 0.5.
3. Same day cases are defined as **non-elective inpatient discharges** which are admitted and discharged on the same date i.e. date of discharge=date of admission. Same day cases are distinct from day cases as defined in note 1 above.



## Pseudocode for Applying the ABF Price List

```
IF DISCHARGE_DATE-ADMISSION_DATE=0 THEN LOS=0.5;
ELSE LOS= DISCHARGE_DATE-ADMISSION_DATE

IF DAYCASE INDICATOR=1 THEN DO;
    WU=DAYCASE;
    VALUE=WU*DAYCASE_BASEPRICE;
END;

ELSE IF DAYCASE INDICATOR=0 THEN DO;

    IF LOS=0.5 THEN WU=SAMEDAY;
    ELSE IF LOS=1 AND LBOUND GT 1 THEN WU=ONEDAY;
    ELSE IF LOS>=2 AND LOS< LBOUND THEN WU=ONEDAY+(LOS-1)*MULTILOW;
    ELSE IF LOS>=1 AND LOS>= LBOUND AND RAWLOS<=HBOUND THEN WU=INLIER;
    ELSE IF LOS>=2 AND LOS> HBOUND THEN WU=INLIER+(LOS- HBOUND)*MULTIHIGH;

    VALUE=WU*INPATIENT_BASEPRICE;

END;
```

Notes: Length of stay is calculated as date of discharge - date of admission. The length of stay for cases admitted and discharged on the same day is set to 0.5.

Lbound and Hbound represent the low and high length of stay boundaries.

## Example I04B Knee replacement, minc (Inpatient)

Low Boundary = 3 days  
High Boundary = 9 days  
Inlier Price = €11,032

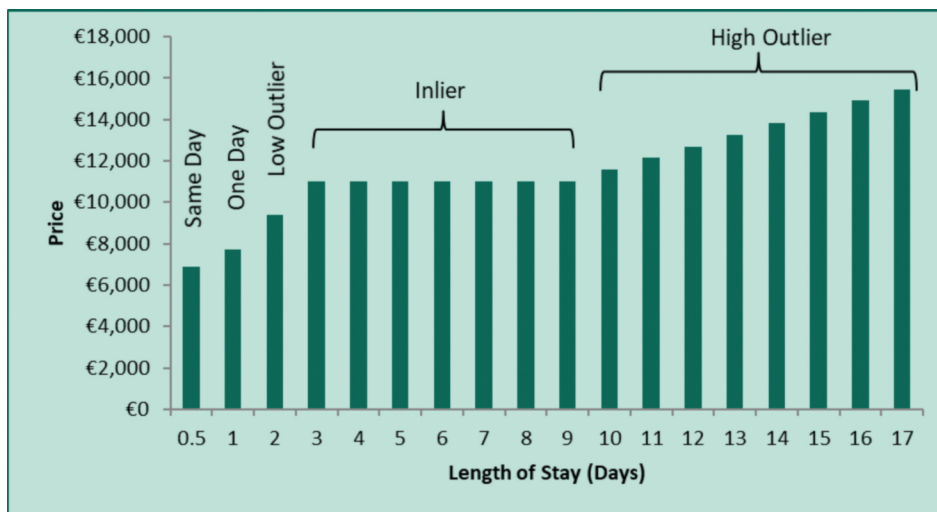
Length of Stay	Case Type	WU Calculation	WU	Price Paid
0.5	Same Day	1.353	1.353	€6,910
1	One Day	1.515	1.515	€7,734
2	Low Outlier	$1.515 + .323$	1.838	€9,383
7	Inlier	2.160	2.160	€11,032
17	High Outlier	$2.160 + 8 * 0.109$	3.033	€15,470

### Notes:

The values presented in this table have been rounded therefore multiplying the WU value by the base price will not yield the exact price to be paid.

\* WU here refers to daycase WU and the value is derived by multiplying the day case WU by the day case base price

## I04B Knee replacement, Minor Complications Payment Curve



## Important Notes on Using the Price List

The following technical notes should be understood and adhered to when using the information contained in the price list.

1. The weighted unit values and prices quoted in this document are intended for use in determining the DRG price to be paid for ABF activity undertaken during 2020 only. These prices should not be applied to activity from other years.
2. The RVs and base prices contained in this price list have been generated as a complementary pairing and should only be used in conjunction with each other. It is not valid to take the base prices from one year and apply them the RVs/WU from another year to obtain estimates of activity value.
3. The relative values and prices presented in this document are applicable to the entire episode of care from admission to an inpatient or daycase bed to discharge from hospital. They cannot be used to infer either a cost or price for the treatment of a particular diagnosis, or the provision of a particular intervention or procedure in isolation of the entire episode of care. The HPO does not provide pricing information for individual diagnoses, interventions or procedures.
4. The value of activity derived by applying this price list to the 2020 HIPE activity data does not include ABF co-payments to hospitals for:
  - a. high cost oncology drugs
  - b. tertiary referral hospitals
  - c. specialist paediatric hospitals
  - d. premium associated with agency staff

These co-payments are made at the hospital level and are not broken down to the individual DRG level.

5. In instances where there are insufficient case numbers to derive a reliable price for a particular complexity level within an ADRG, cases are pooled and a common price is set for 2 or more DRGs within the ADRG.
6. A DRG price is quoted if there has been at least 1 case reported on the national HIPE file. In particular, the presence of a daycase price for a DRG where the case numbers are small is not an indication that this activity should be undertaken as a daycase.

# INPATIENTS



DRG	DRG Description	Indicative Inpatient Cases	Inpatient Inlier Price	Same Day RV	One Day RV	Multi Low RV	Inlier RV	Multi High RV	Average Length of Stay	Lequiv (Low Boundary)	Lequiv (High Boundary)
<b>UNRELATED OR DRGS</b>											
801A	OR PR UNREL TO PDX, MAJC	419	€52,790	0.770	0.927	0.314	10.338	0.148	48.5	31	65
801B	OR PR UNREL TO PDX, INTC	545	€16,099	0.631	1.472	1.681	3.153	0.145	16.7	2	34
801C	OR PR UNREL TO PDX, MINC	364	€6,734	0.452	1.319		1.319	0.135	5.2	1	20
963Z	NEONATAL DX NOT CONSNT AGE/WGT	< 5	€848	0.080	0.166		0.166	0.159	1.0	1	1
<b>PRE MDC</b>											
A01Z	LIVER TRANSPLANT	58	€68,977	3.570	4.043	0.946	13.508	0.401	28.2	11	45
A03Z	LUNG OR HEART-LUNG TRANSPLANT	38	€94,789	4.435	4.863	0.856	18.562	0.292	33.8	17	51
A05Z	HEART TRANSPLANT	15	€154,442	3.088	3.363	0.549	30.244	0.358	66.7	50	84
A06A	TRACHEOSTMY/VENT>=96HRS, MAJC	236	€208,605	2.853	3.075	0.444	40.850	0.201	103.1	86	120
A06B	TRACHEOSTMY/VENT>=96HRS, INTC	807	€108,991	1.647	1.917	0.540	21.343	0.281	53.8	37	71
A06C	TRACHEOSTMY/VENT>=96HRS, MINC	1,096	€53,968	0.984	1.440	0.913	10.568	0.261	28.5	11	45
A07A	ALLOGENEIC BMT, AGE<=16Y/MAJC	52	€202,698	0.843	1.440	1.195	39.693	0.849	50.1	33	67
A07B	ALLOGENEIC BMT, AGE>=17Y+MINC	62	€116,323	0.616	1.250	1.266	22.779	0.666	35.0	18	52
A08A	AUTOLOGOUS BMT, MAJC	121	€45,820	0.425	0.928	1.006	8.973	0.398	23.5	9	40
A08B	AUTOLOGOUS BMT, MINC	52	€21,578	0.424	1.691	2.534	4.225	0.279	11.7	2	29
A09A	KDNY TRANSPLNT, AGE<=16Y/MAJC	36	€54,295	1.612	2.306	1.388	10.632	0.478	14.9	7	30
A09B	KDNY TRANSPLNT, AGE>=17Y+MINC	114	€33,633	1.542	2.001	0.917	6.586	0.447	9.6	6	15
A10Z	INSERTION OF VAD	9	€286,883	4.370	4.583	0.426	56.179	0.401	139.2	122	156
A11A	INS IMPLNT SP INFUS DEV, MAJC	11	€30,232	2.397	3.571		5.920	0.448	6.7	2	18
A11B	INS IMPLNT SP INFUS DEV, MINC	< 5	€29,663	2.250	3.437		5.809	0.433	13.9	2	31
A12Z	INS NEUROSTIMULATOR DEV	86	€24,410	3.307	4.780		4.780	0.410	2.1	1	6
A40A	ECMO, MAJC	5	€263,587	8.677	9.000	0.646	51.617	0.508	84.0	67	101
A40B	ECMO, MINC	19	€98,206	4.029	5.411	2.764	19.231	0.516	22.5	6	40
<b>MDC 01 - DISEASES AND DISORDERS OF THE NERVOUS SYSTEM</b>											
B01A	VENTRICULAR SHUNT REV, MAJC	22	€8,313	0.646	1.628		1.628	0.164	4.0	1	13
B01B	VENTRICULAR SHUNT REV, MINC	53	€6,245	0.592	1.223		1.223	0.147	4.1	1	11
B02A	CRANIAL PROCEDURES, MAJC	211	€31,426	1.516	1.737	0.442	6.154	0.122	28.3	11	45
B02B	CRANIAL PROCEDURES, INTC	613	€15,101	1.232	1.807	1.150	2.957	0.137	10.5	2	27
B02C	CRANIAL PROCEDURES, MINC	1,220	€10,564	0.849	1.256	0.813	2.069	0.140	6.4	2	18
B03A	SPINAL PROCEDURES, MAJC	57	€18,417	1.348	2.101	1.505	3.607	0.182	17.4	2	34
B03B	SPINAL PROCEDURES, INTC	105	€8,605	0.997	1.685		1.685	0.147	4.1	1	15
B03C	SPINAL PROCEDURES, MINC	79	€8,004	0.868	1.567		1.567	0.100	4.0	1	15
B04A	EXTRACRANIAL VASCULAR PR, MAJC	49	€23,351	1.529	1.867	0.676	4.573	0.152	21.4	5	38
B04B	EXTRACRANIAL VASCULAR PR, INTC	96	€14,798	1.251	1.580	0.659	2.898	0.135	10.6	3	28
B04C	EXTRACRANIAL VASCULAR PR, MINC	210	€9,860	1.117	1.388		1.931	0.134	4.7	2	13
B05Z	CARPAL TUNNEL RELEASE	36	€2,946	0.208	0.577		0.577	0.138	1.4	1	3
B06A	CBL PSY,MUS DYSY,NPTHY PR,MAJC	39	€38,945	0.657	0.845	0.377	7.627	0.169	35.7	19	53
B06B	CBL PSY,MUS DYSY,NPTHY PR,INTC	41	€14,119	0.481	2.765		2.765	0.145	12.1	1	29
B06C	CBL PSY,MUS DYSY,NPTHY PR,MINC	122	€7,860	0.401	1.539		1.539	0.184	4.1	1	16

DRG	DRG Description	Indicative Inpatient Cases	Inpatient Inlier Price	Same Day RV	One Day RV	Multi Low RV	Inlier RV	Multi High RV	Average Length of Stay	Legiv (Low Boundary)	Hequiv (High Boundary)
B07A	CRANL/PRPHL NERV&OTH PR, MAJC	53	€16,348	0.513	0.720	0.414	3.201	0.180	24.2	7	41
B07B	CRANL/PRPHL NERV&OTH PR, MINC	295	€3,750	0.430	0.734		0.734	0.132	2.2	1	6
B41Z	TELEMETRIC EEG MONITORING	209	€12,606	0.076	0.873	1.595	2.469	0.150	6.3	2	18
B42A	NERV SYS DIS +VENT SUPP, MAJC	56	€28,041	0.154	1.222	2.135	5.491	0.124	19.6	3	37
B42B	NERV SYS DIS +VENT SUPP, MINC	146	€12,372	0.154	2.423		2.423	0.127	6.4	1	23
B60A	ACUTE PARA/QUAD+/-OR PR, MAJC	20	€69,741	1.170	1.341	0.342	13.657	0.185	53.6	37	71
B60B	ACUTE PARA/QUAD+/-OR PR, MINC	82	€18,721	0.710	3.666		3.666	0.151	14.1	1	31
B61A	SPINAL CORD COND+/-OR PR, MAJC	84	€30,551	0.672	0.952	0.559	5.983	0.151	26.9	10	44
B61B	SPINAL CORD COND+/-OR PR, MINC	128	€11,692	0.464	2.290		2.290	0.180	8.8	1	26
B62Z	APHERESIS	5	€2,520	0.203	0.494		0.494	0.123	2.5	1	8
B63A	DMNTIA&CHRNIC DIST CBL FN,MAJC	666	€18,540	0.034	0.099	0.131	3.631	0.046	45.4	28	62
B63B	DMNTIA&CHRNIC DIST CBL FN,MINC	592	€5,893	0.024	0.111	0.174	1.154	0.057	24.4	7	41
B64A	DELIRIUM, MAJC	822	€6,486	0.043	0.452	0.818	1.270	0.067	15.8	2	33
B64B	DELIRIUM, MINC	960	€2,689	0.043	0.527		0.527	0.074	5.9	1	23
B65A	CEREBRAL PALSY, MAJC	16	€8,095	0.154	1.585		1.585	0.302	5.8	1	23
B65B	CEREBRAL PALSY, MINC	15	€1,552	0.103	0.304		0.304	0.123	4.5	1	18
B66A	NERVOUS SYSTEM NEOPLASM, MAJC	562	€10,188	0.114	0.741	1.254	1.995	0.134	17.3	2	34
B66B	NERVOUS SYSTEM NEOPLASM, MINC	707	€5,847	0.066	1.145		1.145	0.129	7.4	1	24
B67A	DEGNRTV NERV SYS DIS, MAJC	888	€11,432	0.164	0.395	0.461	2.239	0.103	22.2	5	39
B67B	DEGNRTV NERV SYS DIS, INTC	775	€5,624	0.164	1.101		1.101	0.101	7.2	1	24
B67C	DEGNRTV NERV SYS DIS, MINC	143	€5,589	0.163	1.095		1.095	0.144	5.4	1	19
B68A	MLT SCLROSIS&CBL ATAXIA, MAJC	437	€8,745	0.269	1.713		1.713	0.127	11.1	1	28
B68B	MLT SCLROSIS&CBL ATAXIA, MINC	513	€5,919	0.269	1.159		1.159	0.159	5.4	1	18
B69A	TIA & PRECEREBRL OCCLUSN, MAJC	798	€4,011	0.061	0.785		0.785	0.084	7.5	1	25
B69B	TIA & PRECEREBRL OCCLUSN, MINC	2,141	€2,280	0.061	0.446		0.446	0.091	3.9	1	13
B70A	STROKE & OTH CEREB DIS, MAJC	830	€28,454	0.087	0.198	0.224	5.572	0.108	41.9	25	59
B70B	STROKE & OTH CEREB DIS, INTC	2,255	€8,777	0.082	0.628		1.719	0.103	15.8	2	33
B70C	STROKE & OTH CEREB DIS, MINC	2,655	€5,259	0.081	0.398		1.030	0.104	8.1	2	25
B70D	STROKE & OTH CEREB DIS, TR<5D	293	€1,992	0.081	0.390		0.390	0.063	2.2	1	6
B71A	CRANIAL&PERIPHL NERV DIS, MAJC	1,422	€6,338	0.141	1.241		1.241	0.123	6.9	1	24
B71B	CRANIAL&PERIPHL NERV DIS, MINC	420	€6,338	0.141	1.241		1.241	0.142	6.3	1	23
B72A	NRVS SYS INF EX VRL MNGTS,MAJC	257	€19,280	0.138	0.866	1.455	3.776	0.203	19.4	3	36
B72B	NRVS SYS INF EX VRL MNGTS,MINC	287	€8,759	0.099	0.638	1.078	1.715	0.185	8.7	2	26
B73Z	VIRAL MENINGITIS	352	€4,118	0.084	0.806		0.806	0.155	5.1	1	16
B74A	NONTRAUMATIC STUPOR&COMA, MAJC	48	€4,416	0.058	0.865		0.865	0.103	10.2	1	27
B74B	NONTRAUMATIC STUPOR&COMA, MINC	159	€2,225	0.057	0.436		0.436	0.097	3.1	1	11
B75Z	FEBRILE CONVULSIONS	576	€2,357	0.134	0.462		0.462	0.261	1.8	1	4
B76A	SEIZURES, MAJC	2,101	€5,581	0.079	1.093		1.093	0.130	7.2	1	24
B76B	SEIZURES, MINC	5,033	€2,555	0.062	0.500		0.500	0.144	2.8	1	9
B77A	HEADACHES, MAJC	1,756	€2,772	0.069	0.543		0.543	0.103	4.3	1	15

DRG	DRG Description	Indicative Inpatient Cases	Inpatient Inlier Price	Same Day RV	One Day RV	Multi Low RV	Inlier RV	Multi High RV	Average Length of Stay	Legiv (Low Boundary)	Hequiv (High Boundary)
B77B	HEADACHES, MINC	8,325	€1,623	0.062	0.318		0.318	0.103	2.4	1	7
B78A	INTRACRANIAL INJURIES, MAJC	341	€15,381	0.071	0.226	0.310	3.012	0.106	26.9	10	44
B78B	INTRACRANIAL INJURIES, MINC	793	€3,738	0.062	0.732		0.732	0.100	5.8	1	23
B78C	INTRACRANIAL INJURIES, TR<5D	77	€2,499	0.056	0.489		0.489	0.102	2.2	1	6
B79A	SKULL FRACTURES, MAJC	172	€4,832	0.069	0.946		0.946	0.113	6.2	1	23
B79B	SKULL FRACTURES, MINC	198	€1,766	0.069	0.346		0.346	0.124	2.2	1	6
B80A	OTHER HEAD INJURIES, MAJC	463	€3,781	0.090	0.740		0.740	0.080	7.9	1	25
B80B	OTHER HEAD INJURIES, MINC	2,654	€940	0.076	0.184		0.184	0.100	1.3	1	2
B81A	OTHER DIS OF NERVOUS SYS, MAJC	962	€7,036	0.061	0.500	0.878	1.378	0.087	16.8	2	34
B81B	OTHER DIS OF NERVOUS SYS, MINC	4,258	€3,093	0.062	0.606		0.606	0.082	5.4	1	21
B82A	CHR&UNSP PARA/QUAD+/-PR, MAJC	70	€53,402	0.564	0.712	0.295	10.458	0.106	51.5	34	68
B82B	CHR&UNSP PARA/QUAD+/-PR, INTC	238	€10,906	0.220	0.859	1.277	2.136	0.174	14.0	2	31
B82C	CHR&UNSP PARA/QUAD+/-PR, MINC	165	€6,396	0.142	1.252		1.252	0.206	6.4	1	23
<b>MDC 02 - DISEASES AND DISORDERS OF THE EYE</b>											
C01A	PR FOR PENETRRTNG EYE INJ, MAJC	44	€14,769	0.847	2.892		2.892	0.389	5.0	1	16
C01B	PR FOR PENETRRTNG EYE INJ, MINC	61	€9,288	0.620	1.819		1.819	0.383	3.9	1	13
C02Z	ENUCLEATIONS & ORBITAL PROCS	96	€10,188	0.547	1.995		1.995	0.332	3.6	1	13
C03A	RETINAL PROCEDURES, MAJC	1,114	€3,004	0.148	0.588		0.588	0.081	2.9	1	9
C03B	RETINAL PROCEDURES, MINC	152	€3,001	0.174	0.588		0.588	0.101	2.0	1	5
C04A	MJR CORN,SCLERL&CNJNCT PR,MAJC	41	€12,458	0.690	2.440		2.440	0.323	4.7	1	17
C04B	MJR CORN,SCLERL&CNJNCT PR,MINC	103	€5,284	0.482	1.035		1.035	0.302	2.2	1	6
C05Z	DACRYOCYSTORHINOSTOMY	121	€4,281	0.483	0.838		0.838	0.116	1.1	1	1
C10Z	STRABISMUS PROCEDURES	55	€3,897	0.360	0.763		0.763	0.564	1.0	1	1
C11Z	EYELID PROCEDURES	107	€3,888	0.301	0.761		0.761	0.147	1.5	1	3
C12Z	OTHER CORN, SCLERAL&CONJNCT PR	91	€7,128	0.318	1.396		1.396	0.163	4.5	1	18
C13Z	LACRIMAL PROCEDURES	9	€3,663	0.118	0.717		0.717	0.097	2.0	1	6
C14A	OTHER EYE PROCEDURES, MAJC	74	€6,377	0.212	1.249		1.249	0.207	4.8	1	16
C14B	OTHER EYE PROCEDURES, MINC	86	€3,833	0.197	0.751		0.751	0.147	2.4	1	7
C15Z	GLAUCOMA/CMPLX CATARACT PROCS	308	€5,780	0.280	1.132		1.132	0.180	2.3	1	7
C16Z	LENS PROCEDURES	242	€3,993	0.249	0.782		0.782	0.226	1.5	1	3
C60A	AC & MJR EYE INFECTIONS, MAJC	61	€15,276	0.131	1.085		2.991	0.184	11.3	2	28
C60B	AC & MJR EYE INFECTIONS, MINC	182	€6,723	0.131	1.317		1.317	0.277	5.2	1	17
C61A	NEURO & VASCLR DIS EYE, MAJC	411	€4,662	0.080	0.913		0.913	0.131	5.5	1	21
C61B	NEURO & VASCLR DIS EYE, MINC	618	€3,346	0.079	0.655		0.655	0.149	3.6	1	12
C62A	HYPH & MED M TRAUMA EYE, MAJC	198	€5,547	0.073	1.086		1.086	0.126	8.5	1	25
C62B	HYPH & MED M TRAUMA EYE, MINC	319	€2,701	0.058	0.529		0.529	0.152	2.3	1	7
C63A	OTH DIS OF THE EYE, MAJC	218	€4,851	0.068	0.950		0.950	0.111	5.9	1	22
C63B	OTH DIS OF THE EYE, INTC	927	€2,785	0.068	0.545		0.545	0.161	2.9	1	9
C63C	OTH DIS OF THE EYE, MINC	118	€1,741	0.031	0.341		0.341	0.067	2.6	1	8



DRG	DRG Description	Indicative Inpatient Cases	Inpatient Inlier Price	Same Day RV	One Day RV	Multi Low RV	Inlier RV	Multi High RV	Average Length of Stay	Legiv (Low Boundary)	High (High Boundary)
<b>MDC 03 - DISEASES AND DISORDERS OF THE EAR, NOSE, MOUTH AND THROAT</b>											
D01Z	COCHLEAR IMPLANT	136	€44,266	7.714	8.668		8.668	0.139	2.5	1	7
D02A	HEAD & NECK PROCEDURES, MAJC	68	€24,542	2.087	2.994	1.812	4.806	0.219	16.5	2	33
D02B	HEAD & NECK PROCEDURES, INTC	47	€13,332	1.268	2.611		2.611	0.186	8.3	1	25
D02C	HEAD & NECK PROCEDURES, MINC	110	€7,170	0.797	1.404		1.404	0.237	3.2	1	10
D03Z	SURGICAL REPR CLEFT LIP/PALATE	124	€8,940	0.925	1.751		1.751	0.424	2.5	1	6
D04A	MAXILLO SURGERY, MAJC	481	€6,486	0.812	1.270		1.270	0.259	2.7	1	7
D04B	MAXILLO SURGERY, MINC	245	€4,239	0.516	0.830		0.830	0.190	2.3	1	6
D05Z	PAROTID GLAND PROCEDURES	183	€7,821	1.105	1.532		1.532	0.155	2.8	1	8
D06Z	SINUS & COMPLEX MIDDLE EAR PR	700	€5,011	0.652	0.981		0.981	0.143	1.4	1	3
D10Z	NASAL PROCEDURES	473	€4,912	0.452	0.962		0.962	0.126	1.2	1	2
D11Z	TONSILLECTOMY, ADENOIDECTOMY	3,846	€3,477	0.286	0.681		0.681	0.120	1.2	1	2
D12A	OTH EAR,NOSE,MTH&THRT PR, MAJC	126	€7,645	0.467	1.497		1.497	0.161	8.2	1	25
D12B	OTH EAR,NOSE,MTH&THRT PR, MINC	373	€3,852	0.384	0.754		0.754	0.153	2.1	1	6
D13Z	MYRINGOTOMY + TUBE INSERTION	143	€3,097	0.199	0.607		0.607	0.102	2.3	1	7
D14A	MOUTH&SALIVRY GLAND PR, MAJC	277	€4,638	0.368	0.908		0.908	0.189	3.5	1	11
D14B	MOUTH&SALIVRY GLAND PR, MINC	60	€3,379	0.200	0.662		0.662	0.178	1.7	1	4
D15Z	MASTOID PROCEDURES	270	€8,319	1.188	1.629		1.629	0.164	1.7	1	4
D40Z	DENTAL EXTRACT & RESTORATIONS	266	€3,582	0.249	0.701		0.701	0.163	1.7	1	4
D60A	EAR,NOSE,MTH&THRT MALIG, MAJC	356	€14,624	0.246	0.770	1.047	2.864	0.147	20.0	3	37
D60B	EAR,NOSE,MTH&THRT MALIG, MINC	344	€5,494	0.093	1.076		1.076	0.139	5.4	1	22
D61A	DYSEQUILIBRIUM, MAJC	808	€2,741	0.064	0.537		0.537	0.084	5.2	1	19
D61B	DYSEQUILIBRIUM, MINC	4,499	€1,754	0.058	0.343		0.343	0.084	3.0	1	10
D62A	EPISTAXIS, MAJC	128	€5,473	0.088	1.072		1.072	0.117	7.8	1	25
D62B	EPISTAXIS, MINC	812	€2,121	0.050	0.415		0.415	0.118	2.7	1	8
D63A	OTITIS MEDIA&UPP RESP INF,MAJC	3,138	€3,961	0.069	0.776		0.776	0.181	3.8	1	13
D63B	OTITIS MEDIA&UPP RESP INF,MINC	7,272	€1,971	0.060	0.386		0.386	0.144	1.8	1	4
D64A	LARYNGOTRTIS&EPIGLOTTITIS,MAJC	96	€3,323	0.167	0.651		0.651	0.316	2.5	1	7
D64B	LARYNGOTRTIS&EPIGLOTTITIS,MINC	496	€1,634	0.118	0.320		0.320	0.189	1.4	1	3
D65A	NASAL TRAUMA & DEFORMITY, MAJC	106	€3,842	0.096	0.752		0.752	0.076	6.6	1	24
D65B	NASAL TRAUMA & DEFORMITY, MINC	346	€1,793	0.088	0.351		0.351	0.084	1.7	1	4
D66A	OTH EAR,NOSE,MTH&THRT DIS,MAJC	545	€2,625	0.081	0.514		0.514	0.122	4.2	1	15
D66B	OTH EAR,NOSE,MTH&THRT DIS,MINC	1,569	€978	0.081	0.191		0.191	0.093	1.7	1	4
D67A	ORAL & DENTAL DISORDERS, MAJC	410	€4,720	0.104	0.924		0.924	0.158	4.8	1	17
D67B	ORAL & DENTAL DISORDERS, MINC	896	€2,091	0.082	0.410		0.410	0.137	2.2	1	6
<b>MDC 04 - DISEASES AND DISORDERS OF THE RESPIRATORY SYSTEM</b>											
E01A	MAJOR CHEST PROCEDURES, MAJC	69	€29,870	1.454	1.713	0.517	5.849	0.156	26.3	9	43
E01B	MAJOR CHEST PROCEDURES, INTC	288	€17,670	1.250	1.566	0.631	3.460	0.150	13.2	4	30
E01C	MAJOR CHEST PROCEDURES, MINC	655	€12,638	0.925	1.235	0.620	2.475	0.167	8.8	3	22
E02A	OTHER RESPIRATORY SYS PR, MAJC	210	€19,042	0.510	0.867	0.715	3.729	0.165	21.5	5	39

DRG	DRG Description	Indicative Inpatient Cases	Inpatient Inlier Price	Same Day RV	One Day RV	Multi Low RV	Inlier RV	Multi High RV	Average Length of Stay	Lequiv (Low Boundary)	Lequiv (High Boundary)
E02B	OTHER RESPIRATORY SYS PR, INTC	246	€8,792	0.403	1.722		1.722	0.157	7.1	1	24
E02C	OTHER RESPIRATORY SYS PR, MINC	100	€3,418	0.217	0.669		0.669	0.168	1.6	1	3
E40A	RESP SYS DIS, VENT SUPP, MAJC	81	€30,103	0.206	0.585	0.759	5.895	0.152	24.9	8	42
E40B	RESP SYS DIS, VENT SUPP, MINC	206	€17,557	0.135	1.236	2.202	3.438	0.173	11.0	2	28
E41A	RESP SYS DIS, NON-INV VENT, MAJC	709	€20,636	0.106	0.369	0.525	4.041	0.140	24.8	8	42
E41B	RESP SYS DIS, NON-INV VENT, MINC	1,796	€9,318	0.075	0.425	0.700	1.825	0.115	12.7	3	30
E42A	BRONCHOSCOPY, MAJC	902	€11,512	0.143	0.565	0.845	2.254	0.146	16.6	3	34
E42B	BRONCHOSCOPY, MINC	532	€4,907	0.134	0.961		0.961	0.103	6.4	1	23
E60A	CYSTIC FIBROSIS, MAJC	626	€14,692	0.110	0.663	1.107	2.877	0.201	13.5	3	31
E60B	CYSTIC FIBROSIS, MINC	188	€11,243	0.103	0.803	1.399	2.202	0.200	8.8	2	26
E61A	PULMONARY EMBOLISM, MAJC	582	€5,490	0.072	0.407	0.669	1.075	0.094	9.6	2	27
E61B	PULMONARY EMBOLISM, MINC	816	€2,915	0.071	0.571		0.571	0.109	4.5	1	14
E62A	RESPIR INFECTN/INFLAMM, MAJC	8,067	€7,734	0.090	0.565	0.950	1.514	0.106	12.5	2	30
E62B	RESPIR INFECTN/INFLAMM, MINC	7,040	€3,509	0.066	0.687		0.687	0.102	5.4	1	19
E63A	SLEEP APNOEA, MAJC	393	€1,367	0.081	0.268		0.268	0.147	1.2	1	2
E63B	SLEEP APNOEA, MINC	1,332	€789	0.081	0.154		0.154	0.164	1.0	1	1
E64A	PULM OEDEMA & RESP FAIL, MAJC	174	€9,880	0.080	0.698	1.237	1.935	0.109	12.2	2	29
E64B	PULM OEDEMA & RESP FAIL, MINC	247	€4,464	0.074	0.874		0.874	0.108	6.7	1	24
E65A	CHORNIC OBSTR AIRWAY DIS, MAJC	4,754	€5,562	0.062	0.404	0.685	1.089	0.096	10.4	2	27
E65B	CHORNIC OBSTR AIRWAY DIS, MINC	9,567	€2,842	0.057	0.557		0.557	0.091	5.3	1	17
E66A	MAJOR CHEST TRAUMA, MAJC	215	€7,128	0.091	0.526	0.870	1.396	0.092	11.6	2	29
E66B	MAJOR CHEST TRAUMA, MINC	366	€2,251	0.056	0.441		0.441	0.103	3.5	1	12
E67A	RESP SIGNS & SYMPTOMS, MAJC	1,174	€3,744	0.077	0.733		0.733	0.130	4.8	1	18
E67B	RESP SIGNS & SYMPTOMS, MINC	5,297	€1,804	0.061	0.353		0.353	0.127	2.0	1	5
E68A	PNEUMOTHORAX, MAJC	274	€5,602	0.080	0.419	0.678	1.097	0.121	8.5	2	25
E68B	PNEUMOTHORAX, MINC	443	€2,703	0.068	0.529		0.529	0.121	4.1	1	13
E69A	BRONCHITIS & ASTHMA, MAJC	495	€4,476	0.073	0.876		0.876	0.133	5.8	1	21
E69B	BRONCHITIS & ASTHMA, MINC	3,852	€2,479	0.066	0.485		0.485	0.132	2.5	1	7
E70A	WHOOPNG CGH&ACTE BRNCHIO, MAJC	359	€6,993	0.171	1.369		1.369	0.319	4.7	1	16
E70B	WHOOPNG CGH&ACTE BRNCHIO, MINC	2,291	€4,220	0.082	0.826		0.826	0.264	2.8	1	8
E71A	RESPIRATORY NEOPLASMS, MAJC	886	€8,647	0.097	0.629		1.693	0.111	13.1	2	30
E71B	RESPIRATORY NEOPLASMS, MINC	1,179	€4,498	0.082	0.881		0.881	0.127	5.9	1	23
E72Z	RESP PROBS FROM NEONATL PERIOD	75	€9,440	0.184	1.849		1.849	0.362	6.4	1	23
E73A	PLEURAL EFFUSION, MAJC	163	€9,559	0.078	0.676		1.872	0.105	16.8	2	34
E73B	PLEURAL EFFUSION, INTC	387	€5,495	0.077	0.410		1.076	0.115	8.3	2	25
E73C	PLEURAL EFFUSION, MINC	290	€3,662	0.075	0.717		0.717	0.122	5.4	1	21
E74A	INTERSTITIAL LUNG DIS, MAJC	495	€5,901	0.142	0.480		1.155	0.116	10.4	2	27
E74B	INTERSTITIAL LUNG DIS, MINC	369	€3,648	0.141	0.714		0.714	0.150	5.1	1	19
E75A	OTHER RESP SYS DIS, MAJC	8,033	€4,551	0.056	0.891		0.891	0.089	8.5	1	25
E75B	OTHER RESP SYS DIS, MINC	7,608	€2,093	0.049	0.410		0.410	0.098	3.5	1	11

DRG	DRG Description	Indicative Inpatient Cases	Inpatient Inlier Price	Same Day RV	One Day RV	Multi Low RV	Inlier RV	Multi High RV	Average Length of Stay	Lequiv (Low Boundary)	Lequiv (High Boundary)
E76A	RESPIRATORY TUBERCULOSIS, MAJC	55	€11,093	0.057	0.292	0.470	2.172	0.095	22.2	5	39
E76B	RESPIRATORY TUBERCULOSIS, MINC	62	€5,828	0.051	0.415	0.726	1.141	0.100	10.7	2	28
<b>MCD 05 - DISEASES AND DISORDERS OF THE CIRCULATORY SYSTEM</b>											
F01A	IMPL/REPL AICD, TOT SYS, MAJC	67	€46,294	4.159	4.705	1.090	9.066	0.236	19.3	5	36
F01B	IMPL/REPL AICD, TOT SYS, MINC	278	€20,992	2.980	4.111		4.111	0.200	5.1	1	22
F02Z	OTHER AICD PROCEDURES	36	€10,738	1.001	2.103		2.103	0.224	7.3	1	24
F03A	CRD VLV PR+PMP+INV INVES, MAJC	52	€43,495	3.209	3.462	0.506	8.517	0.170	28.4	11	45
F03B	CRD VLV PR+PMP+INV INVES, MINC	82	€35,371	3.207	6.927		6.927	0.136	16.3	1	33
F04A	CRD VLV PR+PMP-INV INVES, MAJC	46	€51,389	2.289	2.627	0.676	10.063	0.166	29.4	12	46
F04B	CRD VLV PR+PMP-INV INVES, INTC	211	€34,454	2.255	2.897	1.283	6.747	0.209	16.5	4	33
F04C	CRD VLV PR+PMP-INV INVES, MINC	363	€26,147	2.217	2.632	0.830	5.120	0.161	11.2	4	28
F05A	CRNRY BYPSS+INV INVES, MAJC	43	€41,773	2.269	2.526	0.514	8.180	0.198	28.7	12	46
F05B	CRNRY BYPSS+INV INVES, MINC	129	€30,341	2.104	2.330	0.451	5.942	0.120	20.8	9	38
F06A	CRNRY BYPSS-INV INVES, MAJC	67	€31,630	2.049	2.426	0.754	6.194	0.154	19.5	6	36
F06B	CRNRY BYPSS-INV INVES, MINC	539	€22,286	1.827	2.109	0.564	4.364	0.177	11.0	5	22
F07A	OTH CARDTHOR/VASC PR+PMP, MAJC	29	€56,106	3.035	3.758	1.446	10.987	0.275	18.9	6	36
F07B	OTH CARDTHOR/VASC PR+PMP, INTC	52	€39,505	2.440	3.197	1.513	7.736	0.280	11.4	4	27
F07C	OTH CARDTHOR/VASC PR+PMP, MINC	83	€27,872	2.274	2.729	0.910	5.458	0.252	10.5	4	24
F08A	MJR RECNRSTR VASC PR-PUMP, MAJC	85	€45,680	3.007	3.227	0.440	8.945	0.176	30.7	14	48
F08B	MJR RECNRSTR VASC PR-PUMP, INTC	337	€22,883	2.144	2.923	1.558	4.481	0.160	12.2	2	29
F08C	MJR RECNRSTR VASC PR-PUMP, MINC	327	€15,694	1.780	2.211	0.862	3.073	0.198	6.8	2	21
F09A	OTH CARDIOTHR PR-CPB PMP, MAJC	33	€35,311	1.041	1.433	0.783	6.915	0.214	24.5	8	42
F09B	OTH CARDIOTHR PR-CPB PMP, INTC	59	€19,317	0.929	3.783		3.783	0.169	8.9	1	26
F09C	OTH CARDIOTHR PR-CPB PMP, MINC	74	€11,076	0.824	2.169		2.169	0.261	3.7	1	14
F10A	INTERVENT CRNRY PR + AMI, MAJC	282	€16,013	0.775	1.562	1.574	3.136	0.165	12.4	2	29
F10B	INTERVENT CRNRY PR + AMI, MINC	1,940	€8,030	0.673	0.973	0.600	1.572	0.216	4.2	2	11
F11A	AMP CIRC DIS-UP LMB&TOE, MAJC	98	€71,399	2.488	2.604	0.232	13.982	0.171	67.2	50	84
F11B	AMP CIRC DIS-UP LMB&TOE, MINC	93	€28,315	1.281	1.439	0.316	5.545	0.172	30.6	14	48
F12A	IMPL/REPL PM, TOT SYS, MAJC	287	€15,361	1.088	3.008		3.008	0.165	12.1	1	29
F12B	IMPL/REPL PM, TOT SYS, MINC	600	€8,657	0.938	1.695		1.695	0.145	4.0	1	15
F13A	AMP CIRC DIS,UPP LMB&TOE, MAJC	52	€20,653	0.830	1.044	0.429	4.044	0.145	25.3	8	42
F13B	AMP CIRC DIS,UPP LMB&TOE, MINC	79	€10,236	0.624	1.084	0.920	2.005	0.159	10.5	2	28
F14A	VASC PR-MJR RECONSTR-PMP, MAJC	127	€21,671	0.936	1.598	1.323	4.244	0.215	20.5	3	37
F14B	VASC PR-MJR RECONSTR-PMP, INTC	359	€10,186	0.705	1.995		1.995	0.158	7.8	1	25
F14C	VASC PR-MJR RECONSTR-PMP, MINC	382	€6,599	0.448	1.292		1.292	0.178	4.1	1	16
F15A	INTERV CRNRY PR-AMI+STNT, MAJC	331	€11,477	0.644	2.247		2.247	0.185	8.5	1	25
F15B	INTERV CRNRY PR-AMI+STNT, MINC	2,111	€5,716	0.640	1.119		1.119	0.176	2.2	1	6
F16A	INTERV CRNRY PR-AMI-STNT, MAJC	15	€8,634	0.552	1.691		1.691	0.151	7.8	1	25
F16B	INTERV CRNRY PR-AMI-STNT, MINC	91	€4,974	0.549	0.974		0.974	0.153	2.8	1	9
F17A	INSERT/REPLACE PACEM GEN, MAJC	28	€12,772	0.992	2.501		2.501	0.154	8.2	1	25

DRG	DRG Description	Indicative Inpatient Cases	Inpatient Inlier Price	Same Day RV	One Day RV	Multi Low RV	Inlier RV	Multi High RV	Average Length of Stay	Legiv (Low Boundary)	Hequiv (High Boundary)
F17B	INSERT/REPLACE PACEM GEN, MINC	41	€5,060	0.518	0.991		0.991	0.055	2.4	1	8
F18A	OTHER PACEMAKER PR, MAJC	31	€14,792	1.122	1.713	1.183	2.897	0.146	10.5	2	28
F18B	OTHER PACEMAKER PR, MINC	47	€6,332	0.559	1.240		1.240	0.148	3.2	1	11
F19A	TRNS-VSCLR PERC CRDC INT, MAJC	60	€18,970	0.957	3.715		3.715	0.257	7.5	1	24
F19B	TRNS-VSCLR PERC CRDC INT, MINC	73	€6,842	0.867	1.340		1.340	0.186	1.2	1	2
F20Z	VEIN LIGATION & STRIPPING	192	€4,312	0.333	0.844		0.844	0.182	1.2	1	2
F21A	OTH CIRCULATORY SYS PR, MAJC	40	€37,079	0.717	0.904	0.374	7.261	0.189	34.9	18	52
F21B	OTH CIRCULATORY SYS PR, INTC	47	€10,801	0.526	2.115		2.115	0.160	8.5	1	25
F21C	OTH CIRCULATORY SYS PR, MINC	38	€5,896	0.459	1.155		1.155	0.188	3.9	1	14
F40A	CIRC DIS +VENT SUPP, MAJC	49	€22,804	0.176	4.466		4.466	0.214	16.4	1	33
F40B	CIRC DIS +VENT SUPP, MINC	52	€11,989	0.169	2.348		2.348	0.177	5.1	1	17
F41A	CRC DSRD+AMI+INVA INV PR, MAJC	146	€9,937	0.276	0.833	1.113	1.946	0.165	9.1	2	26
F41B	CRC DSRD+AMI+INVA INV PR, MINC	563	€5,412	0.275	1.060		1.060	0.164	4.4	1	13
F42A	CIRC DIS-AMI+INVA INV PR, MAJC	1,100	€8,516	0.279	1.668		1.668	0.172	8.2	1	25
F42B	CIRC DIS-AMI+INVA INV PR, MINC	3,170	€4,231	0.186	0.829		0.829	0.191	3.1	1	10
F43A	CIRC DIS +N-INVAS VENT, MAJC	84	€20,686	0.098	0.362	0.527	4.051	0.118	25.4	8	42
F43B	CIRC DIS +N-INVAS VENT, MINC	146	€10,895	0.096	0.503	0.815	2.134	0.135	13.3	3	30
F60A	CIRC DIS+AMI-INVA INV PR	2,251	€6,086	0.083	1.192		1.192	0.115	7.8	1	25
F60B	CIRC DIS+AMI-INVA INV PR,T<5D	621	€2,069	0.078	0.405		0.405	0.165	2.1	1	5
F61A	INFECTIVE ENDOCARDITIS, MAJC	70	€34,364	0.138	0.338	0.399	6.729	0.155	33.7	17	51
F61B	INFECTIVE ENDOCARDITIS, MINC	70	€12,191	0.114	0.569	0.909	2.387	0.141	20.0	3	37
F62A	HEART FAILURE & SHOCK, MAJC	2,054	€8,349	0.068	0.591		1.635	0.095	14.6	2	32
F62B	HEART FAILURE & SHOCK, MINC	3,910	€4,000	0.067	0.306		0.783	0.097	6.8	2	23
F62C	HEART FAILURE & SHOCK, TR<5D	114	€1,867	0.067	0.366		0.366	0.146	2.4	1	6
F63A	VENOUS THROMBOSIS, MAJC	471	€4,629	0.061	0.906		0.906	0.090	8.7	1	26
F63B	VENOUS THROMBOSIS, MINC	1,448	€2,254	0.058	0.441		0.441	0.091	3.7	1	13
F64A	SKN ULCERS IN CIRC DIS, MAJC	129	€9,371	0.083	0.667		1.835	0.120	18.5	2	35
F64B	SKN ULCERS IN CIRC DIS, INTC	235	€5,644	0.076	0.419		1.105	0.110	9.9	2	27
F64C	SKN ULCERS IN CIRC DIS, MINC	64	€3,807	0.061	0.746		0.746	0.097	6.4	1	23
F65A	PERIPHERAL VASCULAR DIS, MAJC	461	€6,789	0.084	1.330		1.330	0.076	10.7	1	28
F65B	PERIPHERAL VASCULAR DIS, MINC	994	€3,594	0.081	0.704		0.704	0.112	4.9	1	20
F66A	CORONARY ATHEROSCLEROSIS, MAJC	321	€4,672	0.092	0.915		0.915	0.117	7.7	1	25
F66B	CORONARY ATHEROSCLEROSIS, MINC	2,242	€2,153	0.058	0.422		0.422	0.101	3.4	1	12
F67A	HYPERTENSION, MAJC	357	€4,154	0.071	0.814		0.814	0.126	6.0	1	23
F67B	HYPERTENSION, MINC	2,335	€1,877	0.054	0.367		0.367	0.101	2.6	1	8
F68A	CONGENITAL HEART DISEASE, MAJC	73	€6,161	0.090	1.206		1.206	0.193	3.1	1	11
F68B	CONGENITAL HEART DISEASE, MINC	55	€3,009	0.087	0.589		0.589	0.175	2.4	1	7
F69A	VALVULAR DISORDERS, MAJC	347	€5,468	0.104	1.071		1.071	0.111	8.7	1	26
F69B	VALVULAR DISORDERS, MINC	3,377	€1,719	0.052	0.337		0.337	0.108	2.6	1	8
F72A	UNSTABLE ANGINA, MAJC	186	€4,525	0.068	0.886		0.886	0.097	7.2	1	24

DRG	DRG Description	Indicative Inpatient Cases	Inpatient Inlier Price	Same Day RV	One Day RV	Multi Low RV	Inlier RV	Multi High RV	Average Length of Stay	Legiv (Low Boundary)	Hequiv (High Boundary)
F72B	UNSTABLE ANGINA, MINC	963	€2,431	0.061	0.476		0.476	0.102	3.9	1	14
F73A	SYNCOPE & COLLAPSE, MAJC	2,652	€4,700	0.081	0.920		0.920	0.083	9.6	1	27
F73B	SYNCOPE & COLLAPSE, MINC	7,652	€1,970	0.066	0.386		0.386	0.088	3.4	1	11
F74A	CHEST PAIN, MAJC	2,278	€2,104	0.061	0.412		0.412	0.095	3.7	1	13
F74B	CHEST PAIN, MINC	15,331	€1,247	0.056	0.244		0.244	0.083	2.1	1	6
F75A	OTHER CIRCULATORY DIS, MAJC	328	€12,728	0.122	0.912	1.580	2.492	0.130	15.8	2	33
F75B	OTHER CIRCULATORY DIS, INTC	512	€5,957	0.105	1.166		1.166	0.151	8.0	1	25
F75C	OTHER CIRCULATORY DIS, MINC	1,651	€3,551	0.073	0.695		0.695	0.139	4.1	1	15
F76A	ARRHY,CARD ARRST&COND DIS,MAJC	2,327	€4,135	0.076	0.810		0.810	0.097	7.0	1	24
F76B	ARRHY,CARD ARRST&COND DIS,MINC	6,282	€1,966	0.058	0.385		0.385	0.101	3.0	1	10
<b>MDC 06 - DISEASES AND DISORDERS OF THE DIGESTIVE SYSTEM</b>											
G01A	RECTAL RESECTION, MAJC	83	€48,535	2.464	2.620	0.313	9.504	0.196	40.3	23	57
G01B	RECTAL RESECTION, INTC	177	€26,591	2.264	2.531	0.535	5.207	0.178	22.6	6	40
G01C	RECTAL RESECTION, MINC	766	€15,999	1.818	2.005	0.376	3.133	0.146	10.6	4	26
G02A	MJR SMALL&LARGE BOWEL PR, MAJC	272	€47,127	1.724	1.866	0.283	9.229	0.197	43.6	27	61
G02B	MJR SMALL&LARGE BOWEL PR, INTC	830	€21,809	1.441	1.845	0.808	4.271	0.152	18.6	4	36
G02C	MJR SMALL&LARGE BOWEL PR, MINC	1,636	€12,594	1.161	1.422	0.522	2.466	0.132	10.1	3	27
G03A	STOMCH,OESHPLG&DUODNL PR, MAJC	160	€30,216	1.815	2.271	0.912	5.917	0.151	22.1	5	39
G03B	STOMCH,OESHPLG&DUODNL PR, INTC	227	€19,818	1.570	2.032	0.924	3.881	0.156	13.0	3	30
G03C	STOMCH,OESHPLG&DUODNL PR, MINC	266	€8,982	0.967	1.759		1.759	0.175	5.6	1	21
G04A	PERITONEAL ADHESOLYSIS, MAJC	88	€24,273	1.153	1.393	0.480	4.753	0.153	25.3	8	42
G04B	PERITONEAL ADHESOLYSIS, INTC	253	€12,716	1.038	1.329	0.581	2.490	0.159	10.4	3	27
G04C	PERITONEAL ADHESOLYSIS, MINC	548	€6,952	0.790	1.361		1.361	0.130	4.2	1	15
G05A	MNR SMALL&LARGE BOWEL PR, MAJC	70	€14,491	0.921	1.304	0.767	2.838	0.153	18.8	3	36
G05B	MNR SMALL&LARGE BOWEL PR, MINC	317	€7,608	0.787	0.927	0.281	1.490	0.125	6.3	3	14
G06Z	PYLOROMYOTOMY	38	€8,395	0.511	0.888	0.756	1.644	0.379	3.7	2	7
G07A	APPENDICECTOMY, MAJC	458	€9,252	0.731	1.091	0.721	1.812	0.135	6.2	2	21
G07B	APPENDICECTOMY, MINC	5,608	€5,239	0.628	1.026		1.026	0.139	2.7	1	7
G10A	HERNIA PROCEDURES, MAJC	418	€9,319	0.846	1.825		1.825	0.145	6.8	1	24
G10B	HERNIA PROCEDURES, MINC	2,202	€5,278	0.593	1.034		1.034	0.129	2.0	1	5
G11A	ANAL & STOMAL PROCEDURES, MAJC	270	€6,774	0.535	1.326		1.326	0.123	6.5	1	23
G11B	ANAL & STOMAL PROCEDURES, MINC	1,123	€3,127	0.331	0.612		0.612	0.115	2.1	1	5
G12A	OTH DIGESTIVE SYS OR PR, MAJC	108	€25,601	0.508	0.704	0.392	5.013	0.107	28.8	12	46
G12B	OTH DIGESTIVE SYS OR PR, INTC	287	€9,875	0.421	0.925		1.934	0.131	11.6	2	29
G12C	OTH DIGESTIVE SYS OR PR, MINC	328	€5,426	0.411	1.063		1.063	0.134	4.9	1	19
G46A	COMPLEX ENDOSCOPY, MAJC	1,192	€8,155	0.202	0.667	0.930	1.597	0.116	11.5	2	29
G46B	COMPLEX ENDOSCOPY, MINC	599	€4,228	0.171	0.828		0.828	0.096	5.1	1	19
G47A	GASTROSCOPY, MAJC	1,640	€5,873	0.116	0.461		1.150	0.091	10.3	2	27
G47B	GASTROSCOPY, INTC	1,618	€2,818	0.116	0.552		0.552	0.096	4.3	1	16
G47C	GASTROSCOPY, MINC	1,724	€2,156	0.104	0.422		0.422	0.087	3.2	1	10

DRG	DRG Description	Indicative Inpatient Cases	Inpatient Inlier Price	Same Day RV	One Day RV	Multi Low RV	Inlier RV	Multi High RV	Average Length of Stay	Lequiv (Low Boundary)	Lequiv (High Boundary)
G48A	COLONOSCOPY, MAJC	1,567	€5,762	0.139	1.128		1.128	0.106	8.9	1	26
G48B	COLONOSCOPY, MINC	1,515	€3,453	0.114	0.676		0.676	0.109	4.2	1	15
G60A	DIGESTIVE MALIGNANCY, MAJC	806	€8,797	0.116	1.723		1.723	0.141	11.8	1	29
G60B	DIGESTIVE MALIGNANCY, MINC	647	€4,684	0.114	0.917		0.917	0.119	5.4	1	22
G61A	GASTROINT HAEMORRHAGE, MAJC	672	€4,164	0.064	0.815		0.815	0.102	7.0	1	24
G61B	GASTROINT HAEMORRHAGE, MINC	1,028	€2,056	0.061	0.403		0.403	0.099	2.9	1	9
G64A	INFLAM BOWEL DISEASE, MAJC	317	€5,314	0.155	0.450	0.590	1.041	0.158	6.6	2	23
G64B	INFLAM BOWEL DISEASE, MINC	776	€3,209	0.155	0.628		0.628	0.130	4.1	1	14
G65A	GASTROINT OBSTRUCTION, MAJC	447	€5,704	0.081	1.117		1.117	0.115	9.9	1	27
G65B	GASTROINT OBSTRUCTION, MINC	1,055	€2,786	0.079	0.546		0.546	0.135	4.4	1	15
G66A	ABDMNL PAIN/MESENT ADNTS, MAJC	2,332	€2,158	0.066	0.423		0.423	0.106	3.0	1	9
G66B	ABDMNL PAIN/MESENT ADNTS, MINC	6,901	€1,378	0.059	0.270		0.270	0.099	1.9	1	5
G67A	OESOPHS & GASTROENTS, MAJC	3,132	€4,724	0.069	0.925		0.925	0.115	5.8	1	22
G67B	OESOPHS & GASTROENTS, MINC	6,908	€2,130	0.065	0.417		0.417	0.128	2.1	1	5
G70A	OTHER DIGESTIVE SYS DIS, MAJC	6,348	€3,643	0.079	0.713		0.713	0.115	5.3	1	19
G70B	OTHER DIGESTIVE SYS DIS, MINC	6,629	€2,069	0.057	0.405		0.405	0.119	2.6	1	8

**MDC 07 - DISEASES AND DISORDERS OF THE HEPATOBILIARY SYSTEM AND PANCREAS**

H01A	PANCREAS,LIVER&SHUNT PR, MAJC	19	€54,101	3.126	3.300	0.347	10.594	0.229	38.7	22	56
H01B	PANCREAS,LIVER&SHUNT PR, INTC	326	€20,112	2.100	2.467	0.735	3.938	0.179	11.8	3	29
H01C	PANCREAS,LIVER&SHUNT PR, MINC	136	€10,903	1.070	2.135		2.135	0.193	7.4	1	24
H02A	MJR BILIARY TRACT PR, MAJC	103	€19,718	0.672	1.128	0.911	3.861	0.173	21.2	4	38
H02B	MJR BILIARY TRACT PR, MINC	173	€10,213	0.503	1.002	0.998	2.000	0.131	10.9	2	28
H05A	HEPATOBILIARY DIAG PR, MAJC	35	€16,464	0.830	3.224		3.224	0.224	16.2	1	33
H05B	HEPATOBILIARY DIAG PR, MINC	50	€7,215	0.339	1.413		1.413	0.118	5.1	1	20
H06A	OTH HEPTOBLILY&PANCRS PR, MAJC	80	€21,963	0.294	0.561	0.534	4.301	0.151	25.0	8	42
H06B	OTH HEPTOBLILY&PANCRS PR, INTC	99	€9,483	0.280	1.857		1.857	0.164	9.9	1	27
H06C	OTH HEPTOBLILY&PANCRS PR, MINC	152	€4,247	0.130	0.832		0.832	0.136	2.0	1	6
H07A	OPEN CHOLECYSTECTOMY, MAJC	25	€20,291	1.210	1.517	0.614	3.974	0.110	22.1	5	39
H07B	OPEN CHOLECYSTECTOMY, INTC	24	€14,078	1.087	1.421	0.668	2.757	0.106	10.7	3	28
H07C	OPEN CHOLECYSTECTOMY, MINC	116	€9,389	1.046	1.310		1.839	0.119	5.7	2	19
H08A	LAP CHOLECYSTECTOMY, MAJC	228	€10,289	0.863	2.015		2.015	0.140	8.6	1	26
H08B	LAP CHOLECYSTECTOMY, MINC	2,440	€6,141	1.203	1.203		1.203	0.114	2.3	0	7
H40A	ENDO PR BLEED OES VARICES,MAJC	36	€17,806	0.298	1.361	2.126	3.487	0.167	19.2	2	36
H40B	ENDO PR BLEED OES VARICES,INTC	39	€9,127	0.216	0.740	1.047	1.787	0.229	7.6	2	25
H40C	ENDO PR BLEED OES VARICES,MINC	24	€6,128	0.192	0.528	0.672	1.200	0.206	5.7	2	16
H43A	ERCP PROCEDURES, MAJC	214	€11,258	0.238	0.519	0.562	2.205	0.138	17.9	4	35
H43B	ERCP PROCEDURES, INTC	387	€6,162	0.229	0.555	0.652	1.207	0.118	8.9	2	26
H43C	ERCP PROCEDURES, MINC	712	€3,960	0.213	0.775		0.775	0.089	5.9	1	23
H60A	CIRRHOSIS&ALC HEPATITIS, MAJC	458	€13,258	0.103	0.934	1.662	2.596	0.121	19.0	2	36
H60B	CIRRHOSIS&ALC HEPATITIS, INTC	576	€5,611	0.083	1.099		1.099	0.119	8.6	1	26

DRG	DRG Description	Indicative Inpatient Cases	Inpatient Inlier Price	Same Day RV	One Day RV	Multi Low RV	Inlier RV	Multi High RV	Average Length of Stay	Lequiv (Low Boundary)	Lequiv (High Boundary)
H60C	CIRRHOSIS&ALC HEPATITIS, MINC	103	€3,345	0.057	0.655		0.655	0.100	5.3	1	21
H61A	MALG HEPATOBL SYS&PANCR, MAJC	505	€9,198	0.109	0.673		1.801	0.122	13.6	2	31
H61B	MALG HEPATOBL SYS&PANCR, MINC	758	€4,706	0.109	0.922		0.922	0.108	6.7	1	24
H62A	PANCREAS DIS -MALIG, MAJC	388	€7,622	0.106	0.568	0.924	1.493	0.123	11.7	2	29
H62B	PANCREAS DIS -MALIG, MINC	1,359	€3,027	0.106	0.593		0.593	0.119	4.9	1	16
H63A	OTH DISORDERS OF LIVER, MAJC	504	€9,794	0.100	0.706	1.212	1.918	0.139	12.8	2	30
H63B	OTH DISORDERS OF LIVER, INTC	817	€4,265	0.083	0.835		0.835	0.136	5.5	1	21
H63C	OTH DISORDERS OF LIVER, MINC	601	€2,566	0.081	0.502		0.502	0.102	3.5	1	12
H64A	BILIARY TRACT DISORDERS, MAJC	1,944	€4,591	0.079	0.352		0.899	0.107	8.0	2	25
H64B	BILIARY TRACT DISORDERS, MINC	2,709	€2,217	0.063	0.434		0.434	0.094	4.1	1	13
<b>MDC 08 - DISEASES AND DISORDERS OF THE MUSCULOSKELETAL SYSTEM &amp; CONNECTIVE TISSUE</b>											
I01A	BL&MLT MJR JNT PR LWR LMB,MAJC	76	€55,632	4.051	4.147	0.193	10.894	0.196	52.6	36	70
I01B	BL&MLT MJR JNT PR LWR LMB,MINC	35	€12,968	1.864	1.999	0.270	2.539	0.276	5.8	3	12
I02A	MCRVAS TT/SKIN GRAFT-HAND,MAJC	21	€64,259	3.130	3.253	0.246	12.584	0.116	55.6	39	73
I02B	MCRVAS TT/SKIN GRAFT-HAND,INTC	76	€22,004	1.771	2.617	1.692	4.309	0.167	18.2	2	35
I02C	MCRVAS TT/SKIN GRAFT-HAND,MINC	36	€12,876	1.283	2.521		2.521	0.240	8.9	1	26
I03A	HIP REPLACEMENT, MAJC	466	€19,680	1.145	1.304	0.319	3.854	0.080	26.0	9	43
I03B	HIP REPLACEMENT, MINC	4,689	€10,967	1.098	1.448	0.700	2.148	0.094	7.2	2	20
I04A	KNEE REPLACEMENT, MAJC	201	€13,683	1.381	1.641	0.519	2.680	0.145	10.3	3	27
I04B	KNEE REPLACEMENT, MINC	2,206	€11,032	1.353	1.515	0.323	2.160	0.109	4.8	3	9
I05A	OTHER JOINT REPLACEMENT, MAJC	46	€13,999	1.377	2.741		2.741	0.123	14.2	1	31
I05B	OTHER JOINT REPLACEMENT, MINC	352	€10,059	1.369	1.970		1.970	0.152	3.4	1	10
I06Z	SPINAL FUSION FOR DEFORMITY	216	€34,423	4.230	5.067	1.674	6.741	0.183	8.8	2	26
I07Z	AMPUTATION	71	€41,383	1.478	1.614	0.270	8.104	0.170	41.8	25	59
I08A	OTHER HIP & FEMUR PR, MAJC	599	€21,703	1.190	1.303	0.227	4.250	0.111	30.9	14	48
I08B	OTHER HIP & FEMUR PR, MINC	2,064	€10,337	0.766	2.024		2.024	0.096	12.3	1	29
I09A	SPINAL FUSION, MAJC	35	€52,346	2.372	2.515	0.286	10.251	0.208	45.0	28	62
I09B	SPINAL FUSION, INTC	179	€19,387	1.835	2.489		3.796	0.160	10.5	2	28
I09C	SPINAL FUSION, MINC	377	€12,742	1.600	2.495		2.495	0.167	4.8	1	16
I10A	OTHER BACK & NECK PR, MAJC	124	€11,734	0.782	2.298		2.298	0.140	14.1	1	31
I10B	OTHER BACK & NECK PR, MINC	917	€5,765	0.635	1.129		1.129	0.159	2.9	1	9
I11Z	LIMB LENGTHENING PROCEDURES	17	€11,622	1.170	2.276		2.276	0.224	4.8	1	16
I12A	MISC PR INFC/INFM BNE/JNT,MAJC	132	€29,731	1.097	1.232	0.270	5.822	0.155	34.8	18	52
I12B	MISC PR INFC/INFM BNE/JNT,INTC	273	€13,705	0.842	1.456	1.228	2.684	0.168	15.2	2	32
I12C	MISC PR INFC/INFM BNE/JNT,MINC	208	€7,740	0.591	1.516		1.516	0.125	6.8	1	24
I13A	HUMER,TIBIA,FIBUL,ANKL PR,MAJC	574	€10,746	1.023	2.104		2.104	0.107	10.3	1	27
I13B	HUMER,TIBIA,FIBUL,ANKL PR,MINC	3,754	€5,867	0.763	1.149		1.149	0.122	2.9	1	9
I15A	CRANIO-FACIAL SURGERY, MAJC	38	€17,136	1.511	2.126	1.230	3.356	0.270	4.3	2	9
I15B	CRANIO-FACIAL SURGERY, MINC	21	€9,024	0.948	1.221	0.546	1.767	0.178	3.8	2	10
I16Z	OTHER SHOULDER PROCEDURES	723	€5,243	0.716	1.027		1.027	0.142	1.2	1	2

DRG	DRG Description	Indicative Inpatient Cases	Inpatient Inlier Price	Same Day RV	One Day RV	Multi Low RV	Inlier RV	Multi High RV	Average Length of Stay	Legiv (Low Boundary)	Hequiv (High Boundary)
I17A	MAXILLO-FACIAL SURGERY, MAJC	31	€11,532	1.002	2.258		2.258	0.254	7.8	1	25
I17B	MAXILLO-FACIAL SURGERY, MINC	44	€4,923	0.607	0.964		0.964	0.170	2.7	1	8
I18A	OTHER KNEE PROCEDURES, MAJC	294	€5,165	0.518	1.011		1.011	0.108	3.9	1	13
I18B	OTHER KNEE PROCEDURES, MINC	266	€3,551	0.423	0.695		0.695	0.092	1.3	1	3
I19A	OTHER ELBOW & FOREARM PR, MAJC	194	€7,566	0.744	1.482		1.482	0.115	6.7	1	24
I19B	OTHER ELBOW & FOREARM PR, MINC	2,970	€4,285	0.579	0.839		0.839	0.116	1.8	1	4
I20A	OTHER FOOT PROCEDURES, MAJC	153	€7,300	0.769	1.430		1.430	0.149	5.0	1	19
I20B	OTHER FOOT PROCEDURES, MINC	968	€4,831	0.606	0.946		0.946	0.124	1.5	1	3
I21Z	LOC EX&REM INT FIX DEV HP&FMR	63	€5,426	0.460	1.063		1.063	0.159	3.5	1	12
I23A	LOC EX&REM INT DEV-HP&FMR,MAJC	124	€5,482	0.581	1.074		1.074	0.112	2.8	1	9
I23B	LOC EX&REM INT DEV-HP&FMR,MINC	287	€3,721	0.278	0.729		0.729	0.141	1.3	1	3
I24A	ARTHROSCOPY, MAJC	56	€6,699	0.570	1.312		1.312	0.240	3.4	1	12
I24B	ARTHROSCOPY, MINC	81	€3,545	0.378	0.694		0.694	0.093	1.8	1	4
I25A	BONE&JNT DIAG PR INC BIOP,MAJC	46	€11,945	0.263	2.339		2.339	0.144	14.0	1	31
I25B	BONE&JNT DIAG PR INC BIOP,MINC	65	€4,915	0.175	0.962		0.962	0.120	4.6	1	19
I27A	SOFT TISSUE PROCEDURES, MAJC	153	€13,652	0.766	2.673		2.673	0.153	16.2	1	33
I27B	SOFT TISSUE PROCEDURES, MINC	683	€5,092	0.359	0.997		0.997	0.143	2.7	1	8
I28A	OTH MUSCULOSKELETAL PR, MAJC	100	€14,011	0.764	1.424		2.744	0.125	17.5	2	34
I28B	OTH MUSCULOSKELETAL PR, INTC	449	€5,739	0.659	1.124		1.124	0.111	3.7	1	13
I28C	OTH MUSCULOSKELETAL PR, MINC	194	€4,029	0.357	0.789		0.789	0.105	2.1	1	6
I29Z	KNEE RECONSTRUCTION/REVISION	348	€6,409	0.963	1.255		1.255	0.163	1.1	1	2
I30Z	HAND PROCEDURES	1,859	€4,093	0.546	0.802		0.802	0.143	1.5	1	3
I31A	REV OF HIP REPLACEMENT, MAJC	63	€37,831	1.957	2.078	0.242	7.408	0.126	40.1	23	57
I31B	REV OF HIP REPLACEMENT, INTC	159	€22,276	1.945	2.428	0.967	4.362	0.121	17.4	3	34
I31C	REV OF HIP REPLACEMENT, MINC	308	€16,972	1.875	2.358	0.966	3.324	0.157	8.6	2	25
I32A	REV OF KNEE REPLACEMENT, MAJC	39	€34,285	2.580	2.722	0.285	6.714	0.150	32.1	15	49
I32B	REV OF KNEE REPLACEMENT, MINC	85	€20,279	2.481	2.779	0.596	3.971	0.183	7.3	3	18
I40Z	INFUSION FOR MUSCLSKLT DIS, SD	88	€337	0.066					0.5	0.5	0.5
I60Z	FEMORAL SHAFT FRACTURES	67	€5,627	0.246	1.102		1.102	0.179	4.9	1	19
I61A	DISTAL FEMORAL FRACTURES, MAJC	19	€12,626	0.186	0.948	1.524	2.472	0.154	18.5	2	36
I61B	DISTAL FEMORAL FRACTURES, MINC	50	€3,849	0.095	0.754		0.754	0.093	4.9	1	20
I63A	SPR,STR&DSL HIP,PEL&THIGH,MAJC	39	€4,816	0.185	0.943		0.943	0.118	10.5	1	28
I63B	SPR,STR&DSL HIP,PEL&THIGH,MINC	133	€1,888	0.106	0.370		0.370	0.083	2.9	1	9
I64A	OSTEOMYELITIS, MAJC	150	€16,145	0.084	0.321	0.473	3.162	0.130	24.4	7	41
I64B	OSTEOMYELITIS, MINC	380	€7,560	0.079	0.546	0.934	1.480	0.117	11.8	2	29
I65A	MUSCULOSK MALIG NEOPLASM, MAJC	184	€17,657	0.161	0.821	1.319	3.458	0.165	18.3	3	35
I65B	MUSCULOSK MALIG NEOPLASM, MINC	787	€7,204	0.123	1.411		1.411	0.165	6.0	1	21
I66A	INFLAM MUSCULOSK DIS, MAJC	96	€20,153	0.194	1.445	2.501	3.947	0.186	19.5	2	36
I66B	INFLAM MUSCULOSK DIS, INTC	182	€9,628	0.125	1.885		1.885	0.178	9.5	1	27
I66C	INFLAM MUSCULOSK DIS, MINC	520	€5,971	0.120	1.169		1.169	0.206	4.6	1	17



DRG	DRG Description	Indicative Inpatient Cases	Inpatient Inlier Price	Same Day RV	One Day RV	Multi Low RV	Inlier RV	Multi High RV	Average Length of Stay	Lequiv (Low Boundary)	Lequiv (High Boundary)
I67A	SEPTIC ARTHRITIS, MAJC	62	€11,193	0.160	0.566	0.813	2.192	0.118	18.1	3	35
I67B	SEPTIC ARTHRITIS, MINC	107	€4,884	0.120	0.956		0.956	0.097	8.2	1	25
I68A	NON-SURG SPINAL DIS, MAJC	1,482	€7,029	0.070	1.377		1.377	0.100	14.3	1	31
I68B	NON-SURG SPINAL DIS, MINC	2,217	€2,779	0.068	0.544		0.544	0.104	4.3	1	16
I69A	BONE DISEASES & ARTHROP, MAJC	357	€5,868	0.082	1.149		1.149	0.131	12.6	1	30
I69B	BONE DISEASES & ARTHROP, MINC	624	€3,247	0.071	0.636		0.636	0.103	4.5	1	17
I71A	OTH MUSCULOTENDINOUS DIS, MAJC	462	€5,260	0.060	1.030		1.030	0.094	9.6	1	27
I71B	OTH MUSCULOTENDINOUS DIS, MINC	1,217	€2,245	0.057	0.440		0.440	0.098	3.3	1	11
I72A	SPECIFIC MUSCTENDIN DIS, MAJC	201	€6,862	0.085	1.344		1.344	0.103	10.6	1	28
I72B	SPECIFIC MUSCTENDIN DIS, MINC	561	€2,563	0.084	0.502		0.502	0.119	3.6	1	13
I73A	AFTCARE MUSCSK IMPL/PROS, MAJC	89	€13,151	0.190	0.294	0.207	2.575	0.117	28.7	12	46
I73B	AFTCARE MUSCSK IMPL/PROS, MINC	229	€3,209	0.115	0.628		0.628	0.099	8.0	1	25
I74A	INJ FOREARM,WRIST,HAND,FT,MAJC	301	€6,768	0.123	1.325		1.325	0.092	15.0	1	32
I74B	INJ FOREARM,WRIST,HAND,FT,MINC	1,043	€1,282	0.105	0.251		0.251	0.065	1.3	1	3
I75A	INJ SH,ARM,ELB,KN,LEG,ANK,MAJC	544	€7,301	0.087	0.534	0.895	1.430	0.071	19.3	2	36
I75B	INJ SH,ARM,ELB,KN,LEG,ANK,MINC	1,250	€1,694	0.086	0.332		0.332	0.078	2.8	1	9
I76A	OTH MUSCULOSKELETAL DIS, MAJC	119	€14,098	0.083	0.327	0.487	2.761	0.129	23.2	6	40
I76B	OTH MUSCULOSKELETAL DIS, INTC	318	€4,691	0.077	0.919		0.919	0.116	7.2	1	24
I76C	OTH MUSCULOSKELETAL DIS, MINC	392	€2,518	0.070	0.493		0.493	0.104	3.3	1	11
I77A	FRACTURES OF PELVIS, MAJC	393	€11,782	0.066	0.198	0.264	2.307	0.096	26.3	9	43
I77B	FRACTURES OF PELVIS, MINC	482	€4,525	0.061	0.886		0.886	0.081	9.6	1	27
I78A	FRACTURES NECK OF FEMUR, MAJC	70	€8,905	0.104	0.339	0.468	1.744	0.101	21.2	4	38
I78B	FRACTURES NECK OF FEMUR, MINC	159	€4,184	0.100	0.819		0.819	0.089	9.8	1	27
I79A	PATHOLOGICAL FRACTURES, MAJC	115	€14,395	0.102	0.311	0.418	2.819	0.158	23.5	7	41
I79B	PATHOLOGICAL FRACTURES, MINC	286	€5,615	0.058	1.100		1.100	0.093	9.7	1	27
I80Z	FEMORAL FRACT, TRANSFERRED <2D	21	€1,036	0.085	0.203		0.203	0.000	1.0	1	1
I81Z	MUSCULOSKELETAL INJURIES, SD	1,770	€615	0.121					0.5	0.5	0.5
I82Z	OTH SD TREATMT, MUSLSKL DIS	5,761	€358	0.070					0.5	0.5	0.5

**MDC 09 - DISEASES AND DISORDERS OF THE SKIN, SUBCUTANEOUS TISSUE AND BREAST**

J01A	MICRVS TSS TRNS SKN/BRST, MAJC	8	€45,527	3.276	3.788	1.025	8.915	0.168	22.7	6	40
J01B	MICRVS TSS TRNS SKN/BRST, MINC	113	€22,393	2.198	2.441	0.486	4.385	0.211	7.5	5	13
J06A	MAJOR PR FOR BREAST DIS, MAJC	244	€8,129	0.833	1.592		1.592	0.129	5.3	1	19
J06B	MAJOR PR FOR BREAST DIS, MINC	1,751	€6,495	0.733	1.272		1.272	0.153	2.5	1	7
J07A	MINOR PR FOR BREAST DIS, MAJC	199	€4,372	0.383	0.856		0.856	0.099	2.2	1	6
J07B	MINOR PR FOR BREAST DIS, MINC	108	€2,972	0.352	0.582		0.582	0.070	1.2	1	2
J08A	OTH SKN GRF& DBRDMNT PR, MAJC	111	€20,423	0.911	1.254	0.686	3.999	0.184	21.6	5	39
J08B	OTH SKN GRF& DBRDMNT PR, INTC	144	€7,921	0.600	1.551		1.551	0.209	5.2	1	19
J08C	OTH SKN GRF& DBRDMNT PR, MINC	270	€5,510	0.293	1.079		1.079	0.160	2.6	1	8
J09Z	PERIANAL & PILONIDAL PROCS	259	€3,613	0.441	0.708		0.708	0.118	1.7	1	4
J10A	SKN,TIS&BRST PLASTIC PR, MAJC	67	€6,907	0.545	1.353		1.353	0.154	4.3	1	16

DRG	DRG Description	Indicative Inpatient Cases	Inpatient Inlier Price	Same Day RV	One Day RV	Multi Low RV	Inlier RV	Multi High RV	Average Length of Stay	Lequiv (Low Boundary)	Lequiv (High Boundary)
J10B	SKN,TIS&BRST PLASTIC PR, MINC	126	€4,964	0.304	0.972		0.972	0.222	1.6	1	4
J11A	OTH SKN,SUBC TIS&BRST PR, MAJC	393	€6,135	0.194	1.201		1.201	0.134	6.4	1	23
J11B	OTH SKN,SUBC TIS&BRST PR, MINC	530	€3,459	0.113	0.677		0.677	0.145	1.6	1	3
J12A	LWR LMB PR +ULC/CEL, MAJC	39	€27,362	0.727	0.868	0.281	5.358	0.125	33.6	17	51
J12B	LWR LMB PR +ULC/CEL, MINC	107	€9,296	0.485	1.820		1.820	0.167	10.7	1	28
J13A	LWR LMB PR -ULC/CEL, MAJC	46	€10,405	0.632	2.038		2.038	0.141	12.2	1	29
J13B	LWR LMB PR -ULC/CEL, MINC	88	€4,904	0.395	0.960		0.960	0.174	3.4	1	13
J14Z	MAJOR BREAST RECONSTRUCTIONS	216	€17,746	2.407	2.763	0.712	3.475	0.114	6.4	2	17
J60A	SKIN ULCERS, MAJC	203	€10,274	0.060	0.190	0.260	2.012	0.066	24.6	8	42
J60B	SKIN ULCERS, INTC	249	€4,373	0.057	0.323	0.533	0.856	0.094	9.2	2	26
J60C	SKIN ULCERS, MINC	162	€3,458	0.017	0.677		0.677	0.093	6.7	1	24
J62A	MALIGNANT BREAST DIS, MAJC	197	€10,422	0.117	0.758	1.283	2.041	0.164	11.3	2	28
J62B	MALIGNANT BREAST DIS, MINC	400	€5,218	0.104	1.022		1.022	0.134	5.9	1	23
J63A	NON-MALIGNANT BREAST DIS, MAJC	261	€2,374	0.078	0.465		0.465	0.119	3.7	1	11
J63B	NON-MALIGNANT BREAST DIS, MINC	201	€1,893	0.076	0.371		0.371	0.082	2.0	1	5
J64A	CELLULITIS, MAJC	2,242	€6,276	0.078	0.462	0.767	1.229	0.093	10.5	2	28
J64B	CELLULITIS, MINC	5,382	€2,427	0.073	0.475		0.475	0.096	3.5	1	11
J65A	TRAUMA TO SKN,SUB TIS&BST,MAJC	519	€6,553	0.075	1.283		1.283	0.096	13.3	1	30
J65B	TRAUMA TO SKN,SUB TIS&BST,MINC	1,333	€1,590	0.075	0.311		0.311	0.093	2.3	1	7
J67A	MINOR SKIN DISORDERS, MAJC	542	€4,302	0.079	0.842		0.842	0.143	5.6	1	21
J67B	MINOR SKIN DISORDERS, MINC	1,807	€1,911	0.056	0.374		0.374	0.116	2.2	1	6
J68A	MAJOR SKIN DISORDERS, MAJC	800	€3,677	0.065	0.720		0.720	0.096	5.7	1	22
J68B	MAJOR SKIN DISORDERS, MINC	350	€2,059	0.049	0.403		0.403	0.098	3.0	1	9
J69A	SKIN MALIGNANCY, MAJC	99	€13,089	0.176	0.971	1.592	2.563	0.161	15.5	2	32
J69B	SKIN MALIGNANCY, INTC	77	€7,168	0.161	1.404		1.404	0.148	8.5	1	26
J69C	SKIN MALIGNANCY, MINC	55	€6,257	0.065	1.225		1.225	0.105	5.4	1	22

**MDC 10 - ENDOCRINE, NUTRITIONAL AND METABOLIC DISEASES AND DISORDERS**

K01A	OR PR FOR DIABETIC COMPL, MAJC	56	€56,890	1.499	1.631	0.264	11.141	0.191	53.6	37	71
K01B	OR PR FOR DIABETIC COMPL, INTC	95	€18,928	0.828	1.089	0.523	3.706	0.157	23.5	6	40
K01C	OR PR FOR DIABETIC COMPL, MINC	193	€11,475	0.603	1.151	1.096	2.247	0.143	12.7	2	30
K02A	PITUITARY PROCEDURES, MAJC	< 5	€18,894	1.346	1.682	0.673	3.700	0.151	15.9	4	33
K02B	PITUITARY PROCEDURES, MINC	61	€11,607	1.222	1.572		2.273	0.160	7.3	2	20
K03Z	ADRENAL PROCEDURES	69	€13,879	1.475	1.889	0.828	2.718	0.233	6.6	2	20
K05A	PARATHYROID PROCEDURES, MAJC	41	€11,323	1.031	2.217		2.217	0.152	6.9	1	24
K05B	PARATHYROID PROCEDURES, MINC	191	€5,640	0.803	1.104		1.104	0.172	2.1	1	5
K06A	THYROID PROCEDURES, MAJC	81	€11,416	1.174	2.236		2.236	0.172	7.2	1	24
K06B	THYROID PROCEDURES, MINC	635	€6,465	0.913	1.266		1.266	0.166	2.4	1	7
K08Z	THYROGLOSSAL PROCEDURES	51	€4,389	0.486	0.860		0.860	0.157	1.7	1	4
K09A	OTH ENDCRN,NUTR&METAB PR, MAJC	32	€22,848	0.842	1.172	0.660	4.474	0.171	23.3	6	40
K09B	OTH ENDCRN,NUTR&METAB PR, MINC	44	€10,553	0.526	2.067		2.067	0.169	8.1	1	25

DRG	DRG Description	Indicative Inpatient Cases	Inpatient Inlier Price	Same Day RV	One Day RV	Multi Low RV	Inlier RV	Multi High RV	Average Length of Stay	Lequiv (Low Boundary)	Lequiv (High Boundary)
K10A	REV & OPEN BARIATRIC PR, MAJC	< 5	€10,514	1.578	2.059		2.059	0.324	12.0	1	29
K10B	REV & OPEN BARIATRIC PR, MINC	8	€7,294	1.137	1.428		1.428	0.107	3.0	1	7
K11A	MAJOR LAP BARIATRIC PR, MAJC	45	€10,039	1.511	1.662	0.304	1.966	0.147	3.7	2	8
K11B	MAJOR LAP BARIATRIC PR, MINC	57	€8,560	1.473	1.676		1.676	0.438	3.0	1	6
K13Z	PLAS OR PROC - END,NUT,MET DIS	32	€8,463	0.974	1.657		1.657	0.276	3.2	1	9
K40A	ENDO&INVEST PR METAB DIS, MAJC	300	€10,119	0.140	0.754	1.227	1.982	0.118	15.7	2	33
K40B	ENDO&INVEST PR METAB DIS, MINC	112	€4,884	0.128	0.956		0.956	0.116	6.3	1	22
K60A	DIABETES, MAJC	921	€7,613	0.079	1.491		1.491	0.131	10.2	1	27
K60B	DIABETES, MINC	2,858	€3,857	0.057	0.755		0.755	0.123	4.5	1	15
K61A	SEV NUTRIT DISTURBANCE, MAJC	30	€33,687	0.086	0.186	0.200	6.597	0.141	49.5	33	67
K61B	SEV NUTRIT DISTURBANCE, MINC	20	€9,557	0.081	0.439	0.716	1.871	0.152	20.0	3	37
K62A	MISC METABOLIC DISORDERS, MAJC	691	€8,112	0.070	1.589		1.589	0.118	12.6	1	30
K62B	MISC METABOLIC DISORDERS, INTC	1,739	€4,243	0.069	0.831		0.831	0.127	6.0	1	23
K62C	MISC METABOLIC DISORDERS, MINC	2,239	€2,839	0.055	0.556		0.556	0.120	3.8	1	13
K63A	INBORN ERR OF METABOLISM, MAJC	171	€9,420	0.157	1.845		1.845	0.324	6.3	1	23
K63B	INBORN ERR OF METABOLISM, MINC	54	€4,563	0.080	0.894		0.894	0.298	2.2	1	6
K64A	ENDOCRINE DISORDERS, MAJC	822	€5,353	0.069	1.048		1.048	0.127	6.1	1	23
K64B	ENDOCRINE DISORDERS, MINC	734	€2,722	0.061	0.533		0.533	0.152	2.7	1	8

**MDC 11 - DISEASES AND DISORDERS OF THE KIDNEY AND URINARY TRACT**

L02A	OP INS PERI CTH DIALYSIS, MAJC	35	€12,666	0.437	1.118	1.362	2.480	0.250	9.4	2	26
L02B	OP INS PERI CTH DIALYSIS, MINC	41	€5,378	0.331	1.053		1.053	0.201	3.9	1	13
L03A	KDNY,URT&MJR BLDR PR NPSM,MAJC	79	€31,301	1.874	2.158	0.567	6.130	0.191	25.4	8	42
L03B	KDNY,URT&MJR BLDR PR NPSM,INTC	241	€17,693	1.536	1.921	0.772	3.465	0.156	10.5	3	27
L03C	KDNY,URT&MJR BLDR PR NPSM,MINC	413	€12,906	1.407	1.780		2.527	0.171	6.2	2	17
L04A	KDY,URT&MJR BLDR PR N-NPM,MAJC	205	€23,003	0.621	1.053	0.863	4.505	0.162	21.5	5	39
L04B	KDY,URT&MJR BLDR PR N-NPM,INTC	644	€9,103	0.562	1.783		1.783	0.142	6.7	1	24
L04C	KDY,URT&MJR BLDR PR N-NPM,MINC	1,367	€5,514	0.498	1.080		1.080	0.188	3.3	1	10
L05A	TRANSURTH PROSTM,URI DIS,MAJC	17	€10,148	0.627	1.081		1.987	0.107	15.9	2	33
L05B	TRANSURTH PROSTM,URI DIS,MINC	98	€6,282	0.610	0.816		1.230	0.095	5.5	2	17
L06A	MINOR BLADDER PROCEDURES, MAJC	58	€16,465	0.732	1.563	1.662	3.224	0.193	15.2	2	32
L06B	MINOR BLADDER PROCEDURES, INTC	108	€7,449	0.493	1.459		1.459	0.133	6.0	1	23
L06C	MINOR BLADDER PROCEDURES, MINC	156	€4,132	0.333	0.809		0.809	0.155	3.3	1	11
L07A	OTH TRANSURETHRAL PROCS, MAJC	264	€7,070	0.429	1.385		1.385	0.129	8.5	1	26
L07B	OTH TRANSURETHRAL PROCS, MINC	1,066	€3,556	0.311	0.696		0.696	0.124	2.9	1	9
L08A	URETHRAL PROCEDURES, MAJC	25	€6,180	0.561	1.210		1.210	0.197	6.0	1	23
L08B	URETHRAL PROCEDURES, MINC	90	€4,483	0.486	0.878		0.878	0.157	2.3	1	6
L09A	OTH PR KIDNY&URNRY TR DIS,MAJC	53	€39,821	0.607	0.839	0.464	7.798	0.217	32.9	16	50
L09B	OTH PR KIDNY&URNRY TR DIS,INTC	49	€12,086	0.569	2.367		2.367	0.179	10.9	1	28
L09C	OTH PR KIDNY&URNRY TR DIS,MINC	132	€5,673	0.545	1.111		1.111	0.183	2.8	1	9
L40Z	URETEROSCOPY	119	€2,950	0.283	0.578		0.578	0.132	2.9	1	9

DRG	DRG Description	Indicative Inpatient Cases	Inpatient Inlier Price	Same Day RV	One Day RV	Multi Low RV	Inlier RV	Multi High RV	Average Length of Stay	Lequiv (Low Boundary)	Lequiv (High Boundary)
L41Z	CYSTOURETHROSCOPY URI DIS, SD	98	€644	0.126					0.5	0.5	0.5
L42Z	ESW LITHOTRIPSY	114	€3,298	0.078	0.646		0.646	0.085	3.3	1	11
L60A	KIDNEY FAILURE, MAJC	588	€15,977	0.121	0.723	1.203	3.129	0.141	19.5	3	37
L60B	KIDNEY FAILURE, INTC	1,776	€6,090	0.116	1.193		1.193	0.132	7.7	1	25
L60C	KIDNEY FAILURE, MINC	536	€3,426	0.115	0.671		0.671	0.143	3.7	1	12
L61Z	HAEMODIALYSIS	9	€4,148	0.086	0.812		0.812	0.129	4.4	1	20
L62A	KDNY&UNRY TR NEOPLASMS, MAJC	210	€8,282	0.121	0.621	1.001	1.622	0.138	13.5	2	30
L62B	KDNY&UNRY TR NEOPLASMS, MINC	322	€3,829	0.094	0.750		0.750	0.111	5.1	1	20
L63A	KDNY&UNRY TR INFECTIONS, MAJC	6,706	€6,209	0.080	0.458	0.758	1.216	0.097	11.4	2	28
L63B	KDNY&UNRY TR INFECTIONS, MINC	8,479	€2,800	0.063	0.548		0.548	0.096	4.5	1	14
L64A	URINARY STONES & OBSTR, MAJC	875	€3,169	0.145	0.621		0.621	0.110	4.1	1	15
L64B	URINARY STONES & OBSTR, MINC	1,741	€1,935	0.074	0.379		0.379	0.103	2.1	1	6
L65A	KDNY&UNRY TR SGNS&SYMPS, MAJC	573	€5,150	0.075	1.009		1.009	0.098	8.6	1	26
L65B	KDNY&UNRY TR SGNS&SYMPS, MINC	1,609	€2,213	0.054	0.433		0.433	0.103	3.3	1	11
L66Z	URETHRAL STRICTURE	101	€2,964	0.069	0.580		0.580	0.120	2.7	1	8
L67A	OTH KIDNY&URNRY TRCT DIS, MAJC	957	€5,940	0.103	1.163		1.163	0.132	7.7	1	25
L67B	OTH KIDNY&URNRY TRCT DIS, INTC	954	€2,988	0.085	0.585		0.585	0.132	3.3	1	11
L67C	OTH KIDNY&URNRY TRCT DIS, MINC	179	€1,948	0.051	0.381		0.381	0.130	2.4	1	6

**MDC 12 - DISEASES AND DISORDERS OF THE MALE REPRODUCTIVE SYSTEM**

M01A	MAJOR MALE PELVIC PROCS, MAJC	54	€15,209	1.786	2.024	0.477	2.978	0.149	8.0	3	21
M01B	MAJOR MALE PELVIC PROCS, MINC	423	€12,791	1.668	1.835	0.335	2.505	0.099	4.8	3	9
M02A	TRANSURTH PROSTM, REP DIS, MAJC	68	€7,644	0.584	0.889		1.497	0.119	7.6	2	22
M02B	TRANSURTH PROSTM, REP DIS, MINC	515	€5,560	0.556	0.734		1.089	0.135	3.9	2	9
M03A	PENIS PROCEDURES, MAJC	54	€10,609	0.662	2.077		2.077	0.243	4.7	1	19
M03B	PENIS PROCEDURES, MINC	131	€5,181	0.374	1.015		1.015	0.177	1.5	1	3
M04Z	TESTES PROCEDURES	812	€4,292	0.431	0.841		0.841	0.161	1.8	1	4
M05Z	CIRCUMCISION	146	€3,248	0.312	0.636		0.636	0.256	1.3	1	3
M06A	OTH MALE REPROD SYS OR PR, MAJC	40	€10,622	0.318	2.080		2.080	0.124	10.5	1	28
M06B	OTH MALE REPROD SYS OR PR, MINC	30	€5,002	0.292	0.980		0.980	0.059	4.5	1	14
M40Z	CYSTURTHRSCPY, MALE REPR DIS, SD	< 5	€270	0.053					0.5	0.5	0.5
M60A	MALE REPR SYS MALIG, MAJC	444	€6,501	0.112	0.499		1.273	0.124	9.6	2	27
M60B	MALE REPR SYS MALIG, MINC	185	€3,862	0.117	0.756		0.756	0.126	4.8	1	19
M61A	BENIGN PROSTATIC HYPERTR, MAJC	40	€3,159	0.103	0.619		0.619	0.091	6.4	1	23
M61B	BENIGN PROSTATIC HYPERTR, MINC	72	€2,113	0.042	0.414		0.414	0.075	2.7	1	8
M62A	MALE REPROD SYS INFLAMM, MAJC	173	€4,114	0.086	0.806		0.806	0.106	6.6	1	24
M62B	MALE REPROD SYS INFLAMM, MINC	948	€2,053	0.070	0.402		0.402	0.113	2.8	1	9
M63Z	MALE STERILISATION PROCS	< 5	€1,885	0.307	0.369		0.369	0.000	1.3	1	3
M64A	OTHER MALE REPROD SYS DIS, MAJC	73	€3,165	0.098	0.620		0.620	0.100	5.0	1	20
M64B	OTHER MALE REPROD SYS DIS, MINC	515	€1,473	0.083	0.288		0.288	0.096	1.6	1	4

DRG	DRG Description	Indicative Inpatient Cases	Inpatient Inlier Price	Same Day RV	One Day RV	Multi Low RV	Inlier RV	Multi High RV	Average Length of Stay	Lequiv (Low Boundary)	Lequiv (High Boundary)
<b>MDC 13 - DISEASES AND DISORDERS OF THE FEMALE REPRODUCTIVE SYSTEM</b>											
N01A	PELVIC EVISC & RAD VLVMY, MAJC	47	€26,764	2.234	2.411	0.354	5.241	0.216	26.0	9	43
N01B	PELVIC EVISC & RAD VLVMY, MINC	101	€12,971	1.526	1.729	0.406	2.540	0.228	7.0	3	16
N04A	HYSTERECTOMY FOR N-MAL, MAJC	212	€11,655	1.111	1.345	0.468	2.282	0.175	6.6	3	16
N04B	HYSTERECTOMY FOR N-MAL, MINC	1,514	€8,242	0.911	1.146	0.469	1.614	0.168	4.2	2	8
N05A	OOPH&COM FAL TBE PR N-MAL,MAJC	58	€10,776	0.955	2.110		2.110	0.205	6.1	1	23
N05B	OOPH&COM FAL TBE PR N-MAL,MINC	565	€6,106	0.665	1.196		1.196	0.192	2.8	1	8
N06A	FEM REP SYS RECON PROC, MAJC	68	€8,276	0.875	1.124	0.497	1.621	0.191	4.6	2	12
N06B	FEM REP SYS RECON PROC, MINC	831	€4,673	0.506	0.915		0.915	0.186	2.5	1	7
N07A	OTH UTRS & ADN X PR N-MAL, MAJC	1,143	€4,626	0.479	0.906		0.906	0.175	2.5	1	7
N07B	OTH UTRS & ADN X PR N-MAL, MINC	189	€2,966	0.325	0.581		0.581	0.148	1.2	1	2
N08Z	ENDOS & LAPAR PR, FEM REPR SYS	374	€4,174	0.378	0.817		0.817	0.160	2.1	1	6
N09Z	OTH VAGINA,CERVIX&VULVA PROCS	771	€3,282	0.217	0.643		0.643	0.172	2.3	1	6
N10Z	DXC CURETTGE, DXC HYSTEROSCOPY	685	€2,673	0.201	0.523		0.523	0.127	2.1	1	6
N11A	OTH FEM REPROD SYS PR, MAJC	91	€12,508	0.684	2.449		2.449	0.176	11.8	1	29
N11B	OTH FEM REPROD SYS PR, MINC	5	€4,584	0.256	0.898		0.898	0.151	3.6	1	15
N12A	UTERUS & ADNEXA PR MALIG, MAJC	35	€21,404	1.388	1.789	0.801	4.192	0.236	16.5	4	33
N12B	UTERUS & ADNEXA PR MALIG, INTC	145	€13,178	1.235	1.504	0.538	2.581	0.174	7.4	3	18
N12C	UTERUS & ADNEXA PR MALIG, MINC	362	€9,373	1.066	1.322	0.513	1.835	0.192	4.3	2	12
N60A	FEMALE REPROD SYS MALIG, MAJC	242	€12,420	0.125	0.894	1.538	2.432	0.135	16.2	2	33
N60B	FEMALE REPROD SYS MALIG, MINC	457	€4,570	0.102	0.895		0.895	0.154	5.7	1	23
N61A	FEM REPROD SYS INFECT, MAJC	92	€3,674	0.076	0.719		0.719	0.118	6.4	1	23
N61B	FEM REPROD SYS INFECT, MINC	286	€1,814	0.040	0.355		0.355	0.118	2.7	1	8
N62A	MNSTR&OTH FEM REPR DIS, MAJC	526	€2,679	0.077	0.525		0.525	0.119	3.6	1	12
N62B	MNSTR&OTH FEM REPR DIS, MINC	2,132	€1,431	0.055	0.280		0.280	0.100	2.0	1	5
<b>MDC 14 - PREGNANCY, CHILDBIRTH AND THE PEURPERIUM</b>											
O01A	CAESAREAN DELIVERY, MAJC	1,446	€10,313	0.347	0.681	0.669	2.020	0.115	10.4	3	27
O01B	CAESAREAN DELIVERY, INTC	7,485	€4,992	0.275	0.416	0.281	0.978	0.111	5.3	3	10
O01C	CAESAREAN DELIVERY, MINC	11,314	€3,755	0.274	0.366	0.185	0.735	0.116	4.0	3	7
O02A	VAGINAL DELIVERY +OR PR, MAJC	141	€7,697	0.256	0.673	0.834	1.507	0.185	4.7	2	10
O02B	VAGINAL DELIVERY +OR PR, MINC	736	€4,114	0.215	0.412	0.394	0.806	0.173	3.2	2	7
O03A	ECTOPIC PREGNANCY, MAJC	125	€5,229	0.525	1.024		1.024	0.199	2.9	1	8
O03B	ECTOPIC PREGNANCY, MINC	570	€3,216	0.333	0.630		0.630	0.151	2.0	1	5
O04A	POSTPARTUM&POST ABORTN+OR,MAJC	84	€8,165	0.434	1.599		1.599	0.276	6.4	1	22
O04B	POSTPARTUM&POST ABORTN+OR,MINC	147	€3,128	0.269	0.613		0.613	0.212	2.6	1	7
O05Z	ABORTION WITH OR PROCEDURES	2,668	€2,233	0.222	0.437		0.437	0.146	1.5	1	3
O60A	VAGINAL DELIVERY, MAJC	3,818	€4,985	0.083	0.380		0.380	0.156	4.4	2	10
O60B	VAGINAL DELIVERY, INTC	17,536	€3,267	0.076	0.640		0.640	0.142	2.9	1	7
O60C	VAGINAL DELIVERY, MINC	16,242	€2,481	0.076	0.486		0.486	0.095	2.1	1	5
O61A	POSTPART&POST ABORTN -OR, MAJC	577	€2,621	0.078	0.513		0.513	0.140	3.8	1	11

DRG	DRG Description	Indicative Inpatient Cases	Inpatient Inlier Price	Same Day RV	One Day RV	Multi Low RV	Inlier RV	Multi High RV	Average Length of Stay	Lequiv (Low Boundary)	Lequiv (High Boundary)
O61B	POSTPART&POST ABORTN -OR, MINC	2,850	€1,269	0.043	0.249		0.249	0.099	2.5	1	7
O63A	ABORTION W/O OR PROCS, MAJC	210	€2,495	0.081	0.489		0.489	0.138	2.8	1	9
O63B	ABORTION W/O OR PROCS, MINC	2,162	€1,019	0.075	0.200		0.200	0.131	1.4	1	3
O66A	ANTENATAL&OTH OBS ADM, MAJC	10,481	€1,367	0.042	0.268		0.268	0.090	2.3	1	6
O66B	ANTENATAL&OTH OBS ADM, MINC	29,472	€967	0.068	0.189		0.189	0.083	1.6	1	4
<b>MDC 15 - NEWBORNS AND OTHER NEONATES</b>											
P01Z	NEONATE W SIG OR/VENT, D/TR<5D	37	€9,597	0.368	1.879		1.879	0.307	2.2	1	7
P02Z	NEO,CARDIOTHORACIC/VASCULAR PR	48	€68,563	3.767	4.275	1.017	13.426	0.484	27.5	10	44
P03A	NEO,ADMWT 1000-1499G+OR/V,MAJC	49	€55,754	0.118	0.229	0.223	10.918	0.162	66.3	49	83
P03B	NEO,ADMWT 1000-1499G+OR/V,MINC	121	€37,726	0.117	0.241	0.246	7.388	0.159	46.6	30	64
P04A	NEO,ADMWT 1500-1999G+OR/V,MAJC	11	€71,062	0.128	0.239	0.221	13.916	0.107	79.8	63	97
P04B	NEO,ADMWT 1500-1999G+OR/V,MINC	93	€27,638	0.126	0.297	0.341	5.412	0.174	33.5	16	50
P05A	NEO,ADMWT 2000-2499G+OR/V,MAJC	15	€76,285	0.136	0.220	0.169	14.939	0.000	105.5	88	122
P05B	NEO,ADMWT 2000-2499G+OR/V,MINC	71	€25,683	0.136	0.581	0.890	5.029	0.228	21.4	6	38
P06A	NEO,ADMWT >=2500G+OR/VENT,MAJC	122	€56,190	0.189	0.498	0.618	11.003	0.181	35.1	18	52
P06B	NEO,ADMWT >=2500G+OR/VENT,MINC	204	€22,660	0.189	1.039	1.699	4.437	0.340	12.2	3	29
P07Z	NEONATE, ADMWT <750G +OR PR	11	€86,524	0.585	0.747	0.324	16.944	0.233	68.0	51	85
P08Z	NEONATE, ADMWT 750-999G +OR PR	9	€96,378	0.329	0.427	0.194	18.873	0.117	113.0	96	130
P60A	NEONATE -OR/V, D/TR<5D, MAJC	92	€4,330	0.171	0.848		0.848	0.338	2.0	1	5
P60B	NEONATE -OR/V, D/TR<5D, MINC	512	€2,721	0.106	0.533		0.533	0.301	1.5	1	3
P61Z	NEONATE, ADMWT <750G -OR PR	84	€84,287	0.202	0.357	0.311	16.506	0.241	69.7	53	87
P62A	NEO, ADMWT 750-999G -OR, MAJC	19	€91,349	0.210	0.333	0.247	17.889	0.203	88.8	72	106
P62B	NEO, ADMWT 750-999G -OR, MINC	72	€63,617	0.138	0.280	0.283	12.458	0.194	61.2	44	78
P63A	NEO,ADMWT 1000-1249G-OR/V,MAJC	14	€49,926	0.099	0.253	0.307	9.777	0.148	48.7	32	66
P63B	NEO,ADMWT 1000-1249G-OR/V,MINC	18	€32,088	0.099	0.231	0.263	6.284	0.182	39.6	24	57
P64A	NEO,ADMWT 1250-1499G-OR/V,MAJC	15	€35,982	0.097	0.251	0.309	7.046	0.149	39.9	23	57
P64B	NEO,ADMWT 1250-1499G-OR/V,MINC	71	€26,028	0.097	0.258	0.323	5.097	0.143	33.0	16	50
P65A	NEO,ADMWT 1500-1999G-OR/V,EXTC	39	€30,825	0.111	0.302	0.382	6.036	0.148	33.4	16	50
P65B	NEO,ADMWT 1500-1999G-OR/V,MAJC	101	€22,100	0.091	0.260	0.339	4.328	0.155	26.7	13	44
P65C	NEO,ADMWT 1500-1999G-OR/V,INTC	350	€16,289	0.088	0.270	0.365	3.190	0.161	20.1	9	37
P65D	NEO,ADMWT 1500-1999G-OR/V,MINC	188	€11,231	0.082	0.788	1.412	2.199	0.162	12.6	2	30
P66A	NEO,ADMWT 2000-2499G-OR/V,EXTC	97	€23,848	0.119	0.533	0.827	4.670	0.212	19.9	6	37
P66B	NEO,ADMWT 2000-2499G-OR/V,MAJC	293	€14,750	0.116	0.512	0.792	2.888	0.207	13.7	4	31
P66C	NEO,ADMWT 2000-2499G-OR/V,INTC	682	€8,614	0.116	1.687		1.687	0.194	8.7	1	26
P66D	NEO,ADMWT 2000-2499G-OR/V,MINC	460	€3,500	0.101	0.685		0.685	0.172	3.9	1	14
P67A	NEO,WT>=2500G-OR/V,<37WKS,EXTC	90	€22,407	0.141	0.990	1.699	4.388	0.224	16.6	3	34
P67B	NEO,WT>=2500G-OR/V,<37WKS,MAJC	179	€13,914	0.141	1.002		2.725	0.234	9.6	2	27
P67C	NEO,WT>=2500G-OR/V,<37WKS,INTC	261	€10,016	0.141	0.748		1.961	0.235	7.2	2	24
P67D	NEO,WT>=2500G-OR/V,<37WKS,MINC	357	€7,817	0.139	1.531		1.531	0.245	5.5	1	21
P68A	NEO,W>=2500G-OR/V,>=37WKS,EXTC	511	€12,517	0.141	0.911		2.451	0.248	9.3	2	26

DRG	DRG Description	Indicative Inpatient Cases	Inpatient Inlier Price	Same Day RV	One Day RV	Multi Low RV	Inlier RV	Multi High RV	Average Length of Stay	Legiv (Low Boundary)	Hequiv (High Boundary)
P68B	NEO,W>=2500G-OR/V,>=37WKS,MAJC	1,044	€6,122	0.136	1.199		1.199	0.248	4.8	1	16
P68C	NEO,W>=2500G-OR/V,>=37WKS,INTC	1,544	€4,697	0.123	0.920		0.920	0.231	3.6	1	11
P68D	NEO,W>=2500G-OR/V,>=37WKS,MINC	5,852	€2,149	0.073	0.421		0.421	0.156	2.3	1	6
<b>MDC 16 - DISEASES AND DISORDERS OF THE BLOOD AND BLOOD FORMING ORGANS AND IMMUNOLOGICAL DISORDERS</b>											
Q01A	SPLENECTOMY, MAJC	< 5	€28,346	1.125	1.527	0.805	5.551	0.405	16.4	6	33
Q01B	SPLENECTOMY, MINC	20	€12,561	1.016	1.497	0.963	2.460	0.176	7.3	2	24
Q02A	BLD&IMM SYS DIS+OTH OR PR,MAJC	58	€21,763	0.566	1.798	2.464	4.262	0.237	18.1	2	35
Q02B	BLD&IMM SYS DIS+OTH OR PR,MINC	189	€6,710	0.193	1.314		1.314	0.186	4.6	1	18
Q60A	RETICLEND&IMMUNITY DIS, MAJC	1,251	€8,360	0.139	1.637		1.637	0.252	6.4	1	22
Q60B	RETICLEND&IMMUNITY DIS, MINC	504	€3,353	0.074	0.657		0.657	0.124	3.3	1	11
Q61A	RED BLOOD CELL DISORDERS, MAJC	2,106	€5,798	0.107	1.135		1.135	0.122	8.1	1	25
Q61B	RED BLOOD CELL DISORDERS, INTC	3,181	€2,980	0.105	0.583		0.583	0.099	3.3	1	11
Q61C	RED BLOOD CELL DISORDERS, MINC	60	€1,796	0.039	0.352		0.352	0.102	2.0	1	6
Q62A	COAGULATION DISORDERS, MAJC	356	€7,316	0.090	1.433		1.433	0.182	7.3	1	24
Q62B	COAGULATION DISORDERS, MINC	570	€3,606	0.076	0.706		0.706	0.194	2.6	1	8
<b>MDC 17 - NEOPLASTIC DISORDERS (HAEMATOLOGICAL AND SOLID NEOPLASMS)</b>											
R01A	LYMPHMA&LEUKMA+MJR OR PR, MAJC	67	€32,987	0.887	1.110	0.446	6.460	0.259	29.8	13	47
R01B	LYMPHMA&LEUKMA+MJR OR PR, MINC	57	€8,909	0.625	1.745		1.745	0.190	6.4	1	23
R02A	OTH NPLSTC DIS+MJR OR PR, MAJC	21	€27,005	1.887	2.373	0.972	5.288	0.179	15.7	4	33
R02B	OTH NPLSTC DIS+MJR OR PR, INTC	92	€13,134	1.139	1.617	0.955	2.572	0.185	8.5	2	25
R02C	OTH NPLSTC DIS+MJR OR PR, MINC	155	€7,212	0.736	1.412		1.412	0.164	4.5	1	15
R03A	LYMPHMA&LEUKMA+OTH OR PR, MAJC	63	€60,133	0.435	0.649	0.428	11.776	0.210	43.9	27	61
R03B	LYMPHMA&LEUKMA+OTH OR PR, INTC	122	€21,166	0.421	1.662	2.483	4.145	0.200	15.3	2	32
R03C	LYMPHMA&LEUKMA+OTH OR PR, MINC	137	€7,274	0.319	1.424		1.424	0.144	5.2	1	22
R04A	OTH NPLSTC DIS+OTH OR PR, MAJC	64	€12,144	0.519	1.139	1.239	2.378	0.115	16.5	2	34
R04B	OTH NPLSTC DIS+OTH OR PR, MINC	103	€6,886	0.448	1.348		1.348	0.140	4.9	1	19
R60A	ACUTE LEUKAEMIA, MAJC	460	€37,944	0.172	0.656	0.968	7.431	0.298	24.5	8	42
R60B	ACUTE LEUKAEMIA, MINC	422	€11,826	0.158	2.316		2.316	0.258	6.8	1	24
R61A	LYMPHOMA&N-ACUTE LEUK, MAJC	1,463	€14,033	0.129	1.002	1.746	2.748	0.219	13.5	2	30
R61B	LYMPHOMA&N-ACUTE LEUK, MINC	1,796	€5,100	0.098	0.999		0.999	0.161	4.4	1	17
R62A	OTHER NEOPLASTIC DIS, MAJC	219	€7,505	0.059	0.530	0.940	1.470	0.088	13.0	2	30
R62B	OTHER NEOPLASTIC DIS, INTC	155	€3,720	0.054	0.728		0.728	0.097	6.1	1	23
R62C	OTHER NEOPLASTIC DIS, MINC	26	€2,933	0.042	0.574		0.574	0.058	4.2	1	13
<b>MDC18 - INFECTIOUS AND PARASITIC DISEASES</b>											
S65A	HIV, MAJC	41	€26,903	0.216	0.777	1.123	5.268	0.214	22.4	5	39
S65B	HIV, INTC	94	€9,595	0.162	0.734		1.879	0.194	9.1	2	26
S65C	HIV, MINC	30	€7,895	0.162	0.623		1.546	0.157	6.0	2	20
T01A	INFECT&PARAS DIS +OR PR, MAJC	127	€39,638	1.173	1.342	0.338	7.762	0.236	37.4	20	54
T01B	INFECT&PARAS DIS +OR PR, INTC	211	€16,477	0.670	1.181	1.023	3.227	0.162	19.7	3	37
T01C	INFECT&PARAS DIS +OR PR, MINC	268	€10,384	0.524	1.027	1.007	2.033	0.152	11.1	2	28

DRG	DRG Description	Indicative Inpatient Cases	Inpatient Inlier Price	Same Day RV	One Day RV	Multi Low RV	Inlier RV	Multi High RV	Average Length of Stay	Lequiv (Low Boundary)	Lequiv (High Boundary)
T40Z	INFECT&PARASTIC DIS +VENT SUPP	33	€23,464	0.166	1.642	2.953	4.595	0.218	19.2	2	36
T60A	SEPTICAEMIA, MAJC	381	€21,183	0.112	0.324	0.425	4.148	0.126	26.8	10	44
T60B	SEPTICAEMIA, INTC	1,068	€9,253	0.080	0.657		1.812	0.123	12.1	2	29
T60C	SEPTICAEMIA, MINC	1,549	€5,767	0.074	0.426		1.129	0.116	7.5	2	25
T61A	POSTOP&POSTTRAUM INFECT, MAJC	351	€6,450	0.129	0.507	0.756	1.263	0.130	9.8	2	27
T61B	POSTOP&POSTTRAUM INFECT, MINC	856	€3,331	0.097	0.652		0.652	0.123	5.0	1	18
T62A	FEVER OF UNKNOWN ORIGIN, MAJC	180	€6,360	0.092	1.245		1.245	0.156	7.1	1	24
T62B	FEVER OF UNKNOWN ORIGIN, MINC	996	€3,609	0.066	0.707		0.707	0.175	3.1	1	10
T63A	VIRAL ILLNESS, MAJC	457	€4,994	0.125	0.978		0.978	0.240	4.3	1	14
T63B	VIRAL ILLNESS, MINC	4,140	€2,277	0.062	0.446		0.446	0.175	2.0	1	5
T64A	OTH INFECT&PARASITIC DIS, MAJC	30	€19,640	0.119	0.368	0.497	3.846	0.158	25.4	8	42
T64B	OTH INFECT&PARASITIC DIS, INTC	132	€8,289	0.111	0.615		1.623	0.175	9.0	2	26
T64C	OTH INFECT&PARASITIC DIS, MINC	287	€3,920	0.091	0.768		0.768	0.150	4.9	1	19

#### MDC 19 - MENTAL DISEASES AND DISORDERS

U60A	MENTAL HEALTH -ECT, SD, MAJC	247	€252	0.049					0.5	0.5	0.5
U60B	MENTAL HEALTH -ECT, SD, MINC	516	€244	0.048					0.5	0.5	0.5
U61A	SCHIZOPHRENIA DISORDERS, MAJC	13	€10,680	0.082	0.162	0.161	2.091	0.093	29.6	13	47
U61B	SCHIZOPHRENIA DISORDERS, MINC	7	€2,079	0.055	0.407		0.407	0.101	5.2	1	16
U62A	PARA&ACUTE PSYCH DIS, MAJC	28	€9,037	0.099	1.770		1.770	0.109	18.5	1	35
U62B	PARA&ACUTE PSYCH DIS, MINC	56	€4,620	0.085	0.905		0.905	0.142	8.1	1	25
U63A	MAJOR AFFECTIVE DIS, MAJC	30	€11,784	0.115	0.554	0.877	2.308	0.130	19.0	3	36
U63B	MAJOR AFFECTIVE DIS, MINC	49	€4,422	0.062	0.866		0.866	0.117	7.2	1	24
U64A	OTH AFFECT&SOMATOFRM DIS, MAJC	47	€7,856	0.069	1.538		1.538	0.095	17.1	1	34
U64B	OTH AFFECT&SOMATOFRM DIS, MINC	130	€2,713	0.049	0.531		0.531	0.097	4.0	1	15
U65A	ANXIETY DISORDERS, MAJC	143	€5,824	0.059	1.140		1.140	0.066	9.5	1	26
U65B	ANXIETY DISORDERS, MINC	323	€2,909	0.059	0.570		0.570	0.121	3.8	1	14
U66A	EATNG&OBSESSV-COMPLSV DIS,MAJC	63	€34,693	0.120	0.311	0.381	6.794	0.196	34.9	18	52
U66B	EATNG&OBSESSV-COMPLSV DIS,MINC	139	€13,159	0.102	2.577		2.577	0.193	12.3	1	29
U67A	PERSONLTY DIS&ACUTE REACT,MAJC	67	€6,968	0.140	1.364		1.364	0.087	17.3	1	34
U67B	PERSONLTY DIS&ACUTE REACT,MINC	164	€3,680	0.147	0.721		0.721	0.093	3.9	1	14
U68A	CHILDHOOD MENTAL DIS, MAJC	47	€6,973	0.166	1.365		1.365	0.272	3.9	1	13
U68B	CHILDHOOD MENTAL DIS, MINC	45	€5,869	0.164	1.149		1.149	0.327	2.6	1	8

#### MDC 20 - ALCOHOL/DRUG USE AND ALCOHOL/DRUG INDUCED ORGANIC MENTAL DISORDERS

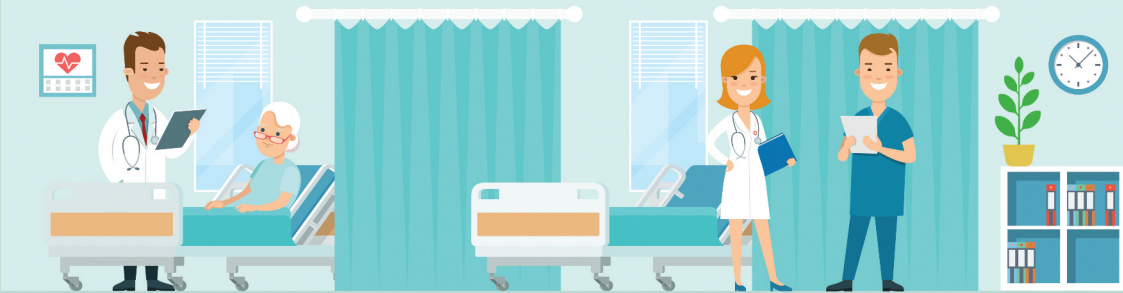
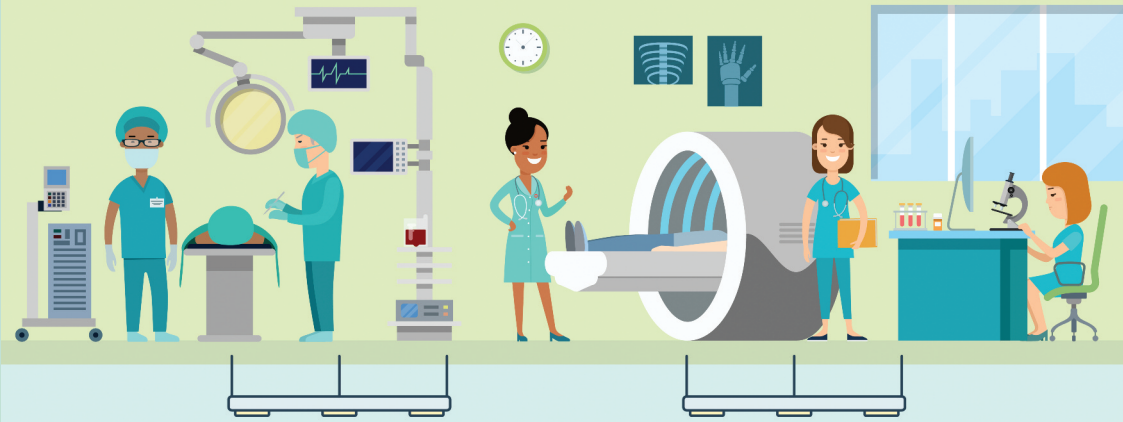
V60A	ALCOHOL INTOX & WITHDRWL, MAJC	465	€3,617	0.057	0.708		0.708	0.096	7.6	1	25
V60B	ALCOHOL INTOX & WITHDRWL, MINC	1,166	€1,688	0.045	0.331		0.331	0.086	2.9	1	9
V61A	DRUG INTOXN&WITHDRAWAL, MAJC	25	€7,577	0.076	1.484		1.484	0.081	7.7	1	25
V61B	DRUG INTOXN&WITHDRAWAL, MINC	106	€1,986	0.047	0.389		0.389	0.088	3.1	1	10
V62A	ALCOHOL USE & DEPENDENCE, MAJC	87	€4,083	0.051	0.800		0.800	0.085	12.2	1	29
V62B	ALCOHOL USE & DEPENDENCE, MINC	483	€1,735	0.043	0.340		0.340	0.082	3.7	1	12
V63Z	OPIOID USE & DEPENDENCE	7	€8,396	0.119	1.644		1.644	0.252	4.3	1	17



DRG	DRG Description	Indicative Inpatient Cases	Inpatient Inlier Price	Same Day RV	One Day RV	Multi Low RV	Inlier RV	Multi High RV	Average Length of Stay	Lequiv (Low Boundary)	Lequiv (High Boundary)
V64Z	OTHER DRUG USE & DEPENDENCE	22	€2,272	0.083	0.445		0.445	0.148	2.8	1	9
V65Z	TREATMT FOR ALCOHOL DIS, SD	453	€290	0.057					0.5	0.5	0.5
V66Z	TREATMT FOR DRUG DIS, SD	52	€259	0.051					0.5	0.5	0.5
<b>MDC 21 - INJURIES, POISONING AND TOXIC EFFECTS OF DRUGS</b>											
W01A	VENT/TRACH/CRA PR FOR MT, MAJC	17	€186,413	3.301	3.510	0.418	36.505	0.341	97.3	80	114
W01B	VENT/TRACH/CRA PR FOR MT, INTC	61	€101,893	1.758	2.047	0.578	19.953	0.173	49.4	32	66
W01C	VENT/TRACH/CRA PR FOR MT, MINC	41	€51,223	1.244	1.595	0.703	10.031	0.358	30.3	13	47
W02A	HIP,FMR&LWR LMB PR FOR MT,MAJC	23	€46,539	2.885	3.030	0.290	9.114	0.098	38.8	22	56
W02B	HIP,FMR&LWR LMB PR FOR MT,MINC	98	€21,708	1.667	1.866	0.397	4.251	0.085	23.7	7	41
W03Z	ABDOMINAL PR MULT SIG TRAUMA	19	€22,111	1.312	1.743	0.862	4.330	0.151	15.0	4	32
W04A	MULT SIG TRAUMA+OTH OR PR,MAJC	18	€38,182	2.004	2.242	0.476	7.477	0.175	28.8	12	46
W04B	MULT SIG TRAUMA+OTH OR PR,MINC	46	€17,548	1.363	1.778	0.829	3.436	0.185	10.2	3	27
W60A	MULT SIG TRAUMA, D/TR<5D, MAJC	25	€13,837	1.000	2.710		2.710	0.193	2.3	1	6
W60B	MULT SIG TRAUMA, D/TR<5D, MINC	42	€8,386	0.664	1.642		1.642	0.324	1.9	1	4
W61A	MULT SIG TRAUMA -OR PR, MAJC	78	€23,236	0.126	0.252	0.253	4.550	0.128	35.0	18	52
W61B	MULT SIG TRAUMA -OR PR, MINC	132	€6,635	0.104	1.299		1.299	0.124	7.4	1	24
X02A	MVSLCR TT/SKN GR INJ HAND,MAJC	23	€15,917	1.437	3.117		3.117	0.311	8.3	1	25
X02B	MVSLCR TT/SKN GR INJ HAND,MINC	69	€5,990	0.658	1.173		1.173	0.277	2.5	1	8
X04A	OTH PR INJURIES LWR LIMB, MAJC	40	€18,035	0.911	1.202	0.582	3.532	0.127	22.5	5	39
X04B	OTH PR INJURIES LWR LIMB, MINC	166	€3,945	0.456	0.773		0.773	0.136	2.7	1	8
X05A	OTH PR FOR INJ TO HAND, MAJC	270	€4,984	0.606	0.976		0.976	0.264	2.7	1	8
X05B	OTH PR FOR INJ TO HAND, MINC	829	€2,955	0.241	0.579		0.579	0.132	1.4	1	3
X06A	OTH PR FOR OTH INJURIES, MAJC	128	€18,209	0.852	1.757	1.809	3.566	0.156	19.0	2	36
X06B	OTH PR FOR OTH INJURIES, INTC	274	€7,537	0.564	1.476		1.476	0.194	6.8	1	24
X06C	OTH PR FOR OTH INJURIES, MINC	888	€3,809	0.244	0.746		0.746	0.136	2.5	1	7
X07A	SKIN GRAFT, INJ EXCL HAND,MAJC	39	€23,621	1.180	1.493	0.626	4.626	0.204	22.8	6	40
X07B	SKIN GRAFT, INJ EXCL HAND,INTC	38	€13,627	0.922	1.504	1.165	2.669	0.179	13.6	2	31
X07C	SKIN GRAFT, INJ EXCL HAND,MINC	47	€6,852	0.590	1.342		1.342	0.135	5.6	1	23
X40A	INJ,POIS,TOX EF+VENT SUPP,MAJC	28	€20,507	0.162	1.446	2.569	4.016	0.072	13.2	2	30
X40B	INJ,POIS,TOX EF+VENT SUPP,MINC	62	€10,209	0.143	0.762	1.238	1.999	0.103	5.9	2	18
X60A	INJURIES, MAJC	1,027	€5,656	0.091	1.108		1.108	0.095	11.4	1	28
X60B	INJURIES, MINC	3,506	€1,723	0.090	0.337		0.337	0.088	2.0	1	5
X61A	ALLERGIC REACTIONS, MAJC	88	€2,123	0.081	0.416		0.416	0.125	3.4	1	12
X61B	ALLERGIC REACTIONS, MINC	333	€907	0.063	0.178		0.178	0.096	1.3	1	3
X62A	POISON/TOXIC EFF DRUGS, MAJC	923	€4,469	0.058	0.875		0.875	0.103	5.8	1	23
X62B	POISON/TOXIC EFF DRUGS, MINC	2,932	€1,599	0.045	0.313		0.313	0.116	2.0	1	5
X63A	SEQUELAE OF TREATMENT, MAJC	648	€6,055	0.126	1.186		1.186	0.164	7.6	1	25
X63B	SEQUELAE OF TREATMENT, MINC	1,942	€2,165	0.051	0.424		0.424	0.150	2.6	1	7
X64A	OTH INJ,POIS&TOXIC EFFCTS,MAJC	277	€6,038	0.097	1.182		1.182	0.110	12.4	1	29
X64B	OTH INJ,POIS&TOXIC EFFCTS,MINC	713	€1,327	0.071	0.260		0.260	0.098	1.9	1	5

DRG	DRG Description	Indicative Inpatient Cases	Inpatient Inlier Price	Same Day RV	One Day RV	Multi Low RV	Inlier RV	Multi High RV	Average Length of Stay	Legiv (Low Boundary)	Hequiv (High Boundary)
<b>MDC 22 - BURNS</b>											
Y01Z	VENT/TRACH/OR PR SEV BURN	12	€119,957	5.188	5.561	0.747	23.491	0.514	41.8	25	59
Y02A	SKIN GRAFT OTHER BURNS, MAJC	65	€33,079	1.133	1.727	1.188	6.478	0.261	22.1	5	39
Y02B	SKIN GRAFT OTHER BURNS, INTC	75	€16,813	0.700	1.564	1.729	3.292	0.204	11.8	2	29
Y02C	SKIN GRAFT OTHER BURNS, MINC	39	€11,243	0.569	2.202		2.202	0.203	7.5	1	25
Y03A	OTH OR PR FOR OTHER BURNS,MAJC	29	€8,960	0.651	1.755		1.755	0.185	6.6	1	24
Y03B	OTH OR PR FOR OTHER BURNS,MINC	54	€8,649	0.474	1.694		1.694	0.225	5.0	1	19
Y60Z	BURNS, TR<5D	30	€2,536	0.174	0.497		0.497	0.315	1.6	1	4
Y61Z	SEVERE BURNS	55	€10,334	0.130	2.024		2.024	0.208	8.8	1	26
Y62A	OTHER BURNS, MAJC	81	€7,146	0.105	1.399		1.399	0.132	8.5	1	26
Y62B	OTHER BURNS, MINC	190	€2,971	0.104	0.582		0.582	0.194	3.8	1	14
<b>MDC 23 - FACTORS INFLUENCING HEALTH STATUS AND OTHER CONTACTS WITH HEALTH SERVICES</b>											
Z01A	OTH CNT HLTH SRV +OR PR, MAJC	115	€19,724	0.635	0.805	0.340	3.862	0.127	26.5	10	44
Z01B	OTH CNT HLTH SRV +OR PR, MINC	221	€5,547	0.297	1.086		1.086	0.148	2.5	1	8
Z40Z	OTH CONTCT HLTH SRV +ENDOSC,SD	25	€468	0.092					0.5	0.5	0.5
Z60A	REHABILITATION, MAJC	745	€18,471	0.049	0.136	0.174	3.617	0.088	37.5	21	55
Z60B	REHABILITATION, MINC	1,243	€10,394	0.036	0.703	1.333	2.035	0.066	18.6	2	36
Z61A	SIGNS & SYMPTOMS, MAJC	537	€6,172	0.078	1.209		1.209	0.106	11.0	1	28
Z61B	SIGNS & SYMPTOMS, INTC	880	€3,427	0.076	0.671		0.671	0.099	4.8	1	19
Z61C	SIGNS & SYMPTOMS, MINC	1,380	€2,429	0.058	0.476		0.476	0.116	3.4	1	12
Z63A	OTH FLLW UP SURG/MED CARE,MAJC	1,126	€8,828	0.059	0.615	1.113	1.729	0.104	16.8	2	34
Z63B	OTH FLLW UP SURG/MED CARE,MINC	1,284	€3,115	0.061	0.610		0.610	0.114	3.9	1	14
Z64A	OTH FACTORS INFL HLTH ST, MAJC	590	€3,222	0.081	0.631		0.631	0.068	7.6	1	25
Z64B	OTH FACTORS INFL HLTH ST, MINC	1,659	€1,522	0.072	0.298		0.298	0.077	1.9	1	5
Z65Z	CONGNTL ANML&PROB FR NEO PERD	54	€6,814	0.118	1.334		1.334	0.325	3.6	1	13
Z66Z	SLEEP DISORDERS	506	€857	0.075	0.168		0.168	0.150	1.0	1	1

# DAYCASES



DRG	DRG Description	Indicative Day Cases	Day Case Price	Day Case RV
<b>UNRELATED OR DRGS</b>				
801B	OR PR UNREL TO PDX, INTC	44	€4,144	5.381
801C	OR PR UNREL TO PDX, MINC	410	€3,029	3.933
<b>PRE MDC</b>				
A06C	TRACHEOSTMY/VENT>=96HRS, MINC	< 5	€5,563	7.223
A07A	ALLOGENEIC BMT, AGE<=16Y/MAJC	< 5	€3,343	4.340
A07B	ALLOGENEIC BMT, AGE>=17Y+MINC	< 5	€2,639	3.427
A08B	AUTOLOGOUS BMT, MINC	< 5	€2,472	3.209
A12Z	INS NEUROSTIMULATOR DEV	109	€18,937	24.588
<b>MDC 01 - DISEASES AND DISORDERS OF THE NERVOUS SYSTEM</b>				
B02A	CRANIAL PROCEDURES, MAJC	< 5	€8,328	10.814
B02B	CRANIAL PROCEDURES, INTC	< 5	€8,233	10.690
B02C	CRANIAL PROCEDURES, MINC	7	€5,973	7.756
B03A	SPINAL PROCEDURES, MAJC	< 5	€8,017	10.410
B03B	SPINAL PROCEDURES, INTC	< 5	€6,871	8.921
B03C	SPINAL PROCEDURES, MINC	19	€5,564	7.224
B04C	EXTRACRANIAL VASCULAR PR, MINC	< 5	€7,112	9.235
B05Z	CARPAL TUNNEL RELEASE	1,590	€1,411	1.833
B06A	CBL PSY,MUS DYSY,NPTHY PR,MAJC	5	€3,985	5.174
B06B	CBL PSY,MUS DYSY,NPTHY PR,INTC	13	€2,905	3.772
B06C	CBL PSY,MUS DYSY,NPTHY PR,MINC	224	€2,485	3.226
B07A	CRANL/PRPHL NERV&OTH PR, MAJC	< 5	€3,671	4.766
B07B	CRANL/PRPHL NERV&OTH PR, MINC	145	€2,203	2.861
B40Z	PLASMAPHERESIS + NEURO DIS, SD	15	€716	0.929
B41Z	TELEMETRIC EEG MONITORING	5	€461	0.599
B60B	ACUTE PARA/QUAD+/-OR PR, MINC	< 5	€4,731	6.143
B61A	SPINAL CORD COND+/-OR PR, MAJC	< 5	€3,731	4.844
B61B	SPINAL CORD COND+/-OR PR, MINC	19	€2,343	3.043
B62Z	APHERESIS	268	€1,249	1.622
B63A	DMNTIA&CHRNIC DIST CBL FN,MAJC	78	€278	0.361
B63B	DMNTIA&CHRNIC DIST CBL FN,MINC	221	€276	0.358
B64A	DELIRIUM, MAJC	8	€345	0.447
B64B	DELIRIUM, MINC	25	€332	0.432
B65A	CEREBRAL PALSY, MAJC	37	€977	1.269
B65B	CEREBRAL PALSY, MINC	318	€552	0.717
B66A	NERVOUS SYSTEM NEOPLASM, MAJC	85	€785	1.019
B66B	NERVOUS SYSTEM NEOPLASM, MINC	1,349	€487	0.632
B67A	DEGNRTV NERV SYS DIS, MAJC	115	€1,063	1.381
B67B	DEGNRTV NERV SYS DIS, INTC	462	€1,084	1.407
B67C	DEGNRTV NERV SYS DIS, MINC	731	€1,079	1.401

DRG	DRG Description	Indicative Day Cases	Day Case Price	Day Case RV
B68A	MLT SCLROSIS&CBL ATAXIA, MAJC	251	€1,605	2.084
B68B	MLT SCLROSIS&CBL ATAXIA, MINC	6,021	€1,605	2.084
B69A	TIA & PRECEREBRL OCCLUSN, MAJC	< 5	€429	0.557
B69B	TIA & PRECEREBRL OCCLUSN, MINC	37	€417	0.541
B70B	STROKE & OTH CEREB DIS, INTC	< 5	€493	0.641
B70C	STROKE & OTH CEREB DIS, MINC	16	€493	0.641
B70D	STROKE & OTH CEREB DIS, TR<5D	5	€493	0.641
B71A	CRANIAL&PERIPHL NERV DIS, MAJC	1,662	€1,033	1.342
B71B	CRANIAL&PERIPHL NERV DIS, MINC	3,280	€1,033	1.342
B72A	NRVS SYS INF EX VRL MNGTS,MAJC	10	€860	1.116
B72B	NRVS SYS INF EX VRL MNGTS,MINC	200	€653	0.848
B73Z	VIRAL MENINGITIS	12	€476	0.618
B74A	NONTRAUMATIC STUPOR&COMA, MAJC	< 5	€363	0.471
B74B	NONTRAUMATIC STUPOR&COMA, MINC	7	€363	0.471
B75Z	FEBRILE CONVULSIONS	35	€917	1.191
B76A	SEIZURES, MAJC	60	€516	0.670
B76B	SEIZURES, MINC	969	€426	0.553
B77A	HEADACHES, MAJC	80	€455	0.591
B77B	HEADACHES, MINC	1,706	€389	0.505
B79A	SKULL FRACTURES, MAJC	< 5	€385	0.501
B79B	SKULL FRACTURES, MINC	< 5	€385	0.501
B80B	OTHER HEAD INJURIES, MINC	12	€569	0.738
B81A	OTHER DIS OF NERVOUS SYS, MAJC	42	€426	0.553
B81B	OTHER DIS OF NERVOUS SYS, MINC	3,093	€284	0.369
B82B	CHR&UNSP PARA/QUAD+/-PR, INTC	12	€1,418	1.841
B82C	CHR&UNSP PARA/QUAD+/-PR, MINC	136	€922	1.198
<b>MDC 02 - DISEASES AND DISORDERS OF THE EYE</b>				
C01A	PR FOR PENETRRTNG EYE INJ, MAJC	< 5	€5,677	7.371
C01B	PR FOR PENETRRTNG EYE INJ, MINC	11	€4,136	5.370
C02Z	ENUCLEATIONS & ORBITAL PROCS	43	€3,531	4.585
C03A	RETINAL PROCEDURES, MAJC	3,444	€926	1.202
C03B	RETINAL PROCEDURES, MINC	31,205	€817	1.061
C04A	MJR CORN,SCLERL&CNJNCT PR,MAJC	< 5	€4,621	6.000
C04B	MJR CORN,SCLERL&CNJNCT PR,MINC	10	€3,538	4.594
C05Z	DACRYOCYSTORRHINOSTOMY	89	€3,410	4.427
C10Z	STRABISMUS PROCEDURES	781	€2,295	2.980
C11Z	EYELID PROCEDURES	1,018	€1,908	2.477
C12Z	OTHER CORN, SCLERAL&CONJNCT PR	435	€2,013	2.614
C13Z	LACRIMAL PROCEDURES	438	€860	1.117
C14A	OTHER EYE PROCEDURES, MAJC	116	€1,422	1.847

DRG	DRG Description	Indicative Day Cases	Day Case Price	Day Case RV
C14B	OTHER EYE PROCEDURES, MINC	1,611	€1,291	1.676
C15Z	GLAUCOMA/CMPLX CATARACT PROCS	927	€1,872	2.431
C16Z	LENS PROCEDURES	13,225	€1,230	1.597
C60A	AC & MJR EYE INFECTIONS, MAJC	< 5	€873	1.133
C60B	AC & MJR EYE INFECTIONS, MINC	37	€864	1.122
C61A	NEURO & VASCLR DIS EYE, MAJC	311	€426	0.553
C61B	NEURO & VASCLR DIS EYE, MINC	790	€426	0.553
C62A	HYPH & MED M TRAUMA EYE, MAJC	35	€438	0.569
C62B	HYPH & MED M TRAUMA EYE, MINC	54	€371	0.482
C63A	OTH DIS OF THE EYE, MAJC	219	€396	0.515
C63B	OTH DIS OF THE EYE, INTC	2,766	€286	0.371
C63C	OTH DIS OF THE EYE, MINC	4,911	€193	0.250
<b>MDC 03 - DISEASES AND DISORDERS OF THE EAR, NOSE, MOUTH AND THROAT</b>				
D02A	HEAD & NECK PROCEDURES, MAJC	< 5	€13,301	17.271
D02B	HEAD & NECK PROCEDURES, INTC	< 5	€7,434	9.653
D02C	HEAD & NECK PROCEDURES, MINC	41	€5,262	6.832
D03Z	SURGICAL REPR CLEFT LIP/PALATE	19	€6,111	7.935
D04A	MAXILLO SURGERY, MAJC	35	€5,220	6.778
D04B	MAXILLO SURGERY, MINC	29	€3,426	4.449
D05Z	PAROTID GLAND PROCEDURES	< 5	€7,524	9.770
D06Z	SINUS & COMPLEX MIDDLE EAR PR	466	€4,298	5.581
D10Z	NASAL PROCEDURES	705	€3,041	3.949
D11Z	TONSILLECTOMY, ADENOIDECTOMY	711	€1,936	2.514
D12A	OTH EAR,NOSE,MTH&THRT PR, MAJC	54	€2,896	3.761
D12B	OTH EAR,NOSE,MTH&THRT PR, MINC	1,206	€2,098	2.724
D13Z	MYRINGOTOMY + TUBE INSERTION	1,994	€1,275	1.656
D14A	MOUTH&SALIVRY GLAND PR, MAJC	277	€2,392	3.106
D14B	MOUTH&SALIVRY GLAND PR, MINC	672	€1,320	1.714
D15Z	MASTOID PROCEDURES	33	€8,061	10.466
D40Z	DENTAL EXTRACT & RESTORATIONS	5,187	€1,684	2.186
D60A	EAR,NOSE,MTH&THRT MALIG, MAJC	53	€1,558	2.023
D60B	EAR,NOSE,MTH&THRT MALIG, MINC	1,024	€642	0.833
D61A	DYSEQUILIBRIUM, MAJC	25	€434	0.563
D61B	DYSEQUILIBRIUM, MINC	403	€354	0.460
D62A	EPISTAXIS, MAJC	< 5	€551	0.716
D62B	EPISTAXIS, MINC	610	€330	0.428
D63A	OTITIS MEDIA&UPP RESP INF,MAJC	200	€443	0.576
D63B	OTITIS MEDIA&UPP RESP INF,MINC	1,778	€247	0.321
D64A	LARYNGOTRTIS&EPIGLOTTITIS,MAJC	< 5	€1,042	1.352
D64B	LARYNGOTRTIS&EPIGLOTTITIS,MINC	17	€812	1.054

DRG	DRG Description	Indicative Day Cases	Day Case Price	Day Case RV
D65A	NASAL TRAUMA & DEFORMITY, MAJC	6	€553	0.718
D65B	NASAL TRAUMA & DEFORMITY, MINC	1,057	€385	0.500
D66A	OTH EAR,NOSE,MTH&THRT DIS,MAJC	609	€459	0.595
D66B	OTH EAR,NOSE,MTH&THRT DIS,MINC	7,434	€284	0.368
D67A	ORAL & DENTAL DISORDERS, MAJC	69	€702	0.912
D67B	ORAL & DENTAL DISORDERS, MINC	1,372	€632	0.821
<b>MDC 04 - DISEASES AND DISORDERS OF THE RESPIRATORY SYSTEM</b>				
E01C	MAJOR CHEST PROCEDURES, MINC	13	€6,093	7.911
E02A	OTHER RESPIRATORY SYS PR, MAJC	6	€3,720	4.830
E02B	OTHER RESPIRATORY SYS PR, INTC	254	€2,661	3.456
E02C	OTHER RESPIRATORY SYS PR, MINC	255	€1,383	1.795
E42A	BRONCHOSCOPY, MAJC	476	€957	1.243
E42B	BRONCHOSCOPY, MINC	6,316	€923	1.199
E60A	CYSTIC FIBROSIS, MAJC	169	€737	0.957
E60B	CYSTIC FIBROSIS, MINC	1,777	€642	0.834
E61A	PULMONARY EMBOLISM, MAJC	< 5	€473	0.614
E61B	PULMONARY EMBOLISM, MINC	12	€452	0.587
E62A	RESPIR INFECTN/INFLAMM, MAJC	26	€586	0.761
E62B	RESPIR INFECTN/INFLAMM, MINC	102	€405	0.526
E63A	SLEEP APNOEA, MAJC	8	€520	0.675
E63B	SLEEP APNOEA, MINC	94	€508	0.659
E64A	PULM OEDEMA & RESP FAIL, MAJC	< 5	€448	0.581
E64B	PULM OEDEMA & RESP FAIL, MINC	6	€439	0.569
E65A	CHORNIC OBSTR AIRWAY DIS, MAJC	106	€700	0.909
E65B	CHORNIC OBSTR AIRWAY DIS, MINC	721	€554	0.720
E66B	MAJOR CHEST TRAUMA, MINC	< 5	€337	0.437
E67A	RESP SIGNS & SYMPTOMS, MAJC	129	€1,209	1.570
E67B	RESP SIGNS & SYMPTOMS, MINC	1,171	€974	1.264
E68A	PNEUMOTHORAX, MAJC	< 5	€454	0.589
E68B	PNEUMOTHORAX, MINC	8	€404	0.525
E69A	BRONCHITIS & ASTHMA, MAJC	68	€1,164	1.512
E69B	BRONCHITIS & ASTHMA, MINC	4,149	€1,133	1.472
E70A	WHOOPNG CGH&ACTE BRNCHIO, MAJC	11	€1,085	1.409
E70B	WHOOPNG CGH&ACTE BRNCHIO, MINC	29	€540	0.701
E71A	RESPIRATORY NEOPLASMS, MAJC	75	€742	0.963
E71B	RESPIRATORY NEOPLASMS, MINC	2,485	€714	0.927
E72Z	RESP PROBS FROM NEONATL PERIOD	8	€1,361	1.768
E73B	PLEURAL EFFUSION, INTC	13	€477	0.620
E73C	PLEURAL EFFUSION, MINC	85	€477	0.620
E74A	INTERSTITIAL LUNG DIS, MAJC	123	€905	1.175

DRG	DRG Description	Indicative Day Cases	Day Case Price	Day Case RV
E74B	INTERSTITIAL LUNG DIS, MINC	630	€905	1.175
E75A	OTHER RESP SYS DIS, MAJC	84	€504	0.654
E75B	OTHER RESP SYS DIS, MINC	600	€493	0.640
E76A	RESPIRATORY TUBERCULOSIS, MAJC	< 5	€383	0.498
E76B	RESPIRATORY TUBERCULOSIS, MINC	9	€317	0.412
<b>MCD 05 - DISEASES AND DISORDERS OF THE CIRCULATORY SYSTEM</b>				
F01A	IMPL/REPL AICD, TOT SYS, MAJC	< 5	€24,036	31.209
F01B	IMPL/REPL AICD, TOT SYS, MINC	266	€18,068	23.461
F02Z	OTHER AICD PROCEDURES	17	€6,681	8.675
F03A	CRD VLV PR+PMP+INV INVES, MAJC	< 5	€17,364	22.546
F04B	CRD VLV PR+PMP-INV INVES, INTC	< 5	€12,208	15.852
F04C	CRD VLV PR+PMP-INV INVES, MINC	< 5	€11,957	15.525
F08C	MJR RECSTR VASC PR-PUMP, MINC	10	€11,622	15.090
F09A	OTH CARDIOTHR PR-CPB PMP, MAJC	< 5	€9,889	12.840
F09B	OTH CARDIOTHR PR-CPB PMP, INTC	< 5	€6,395	8.304
F09C	OTH CARDIOTHR PR-CPB PMP, MINC	18	€5,652	7.338
F10B	INTERVENT CRNRY PR + AMI, MINC	91	€3,666	4.760
F12A	IMPL/REPL PM, TOT SYS, MAJC	6	€7,315	9.498
F12B	IMPL/REPL PM, TOT SYS, MINC	439	€6,023	7.821
F13B	AMP CIRC DIS,UPP LMB&TOE, MINC	< 5	€3,961	5.143
F14A	VASC PR-MJR RECONSTR-PMP, MAJC	17	€5,271	6.844
F14B	VASC PR-MJR RECONSTR-PMP, INTC	45	€4,511	5.857
F14C	VASC PR-MJR RECONSTR-PMP, MINC	208	€2,968	3.853
F15A	INTERV CRNRY PR-AMI+STNT, MAJC	12	€4,001	5.195
F15B	INTERV CRNRY PR-AMI+STNT, MINC	816	€3,817	4.956
F16B	INTERV CRNRY PR-AMI-STNT, MINC	32	€3,409	4.426
F17A	INSERT/REPLACE PACEM GEN, MAJC	16	€6,664	8.653
F17B	INSERT/REPLACE PACEM GEN, MINC	250	€4,301	5.584
F18B	OTHER PACEMAKER PR, MINC	17	€3,652	4.742
F19A	TRNS-VSCLR PERC CRDC INT, MAJC	23	€6,859	8.906
F19B	TRNS-VSCLR PERC CRDC INT, MINC	146	€5,948	7.723
F20Z	VEIN LIGATION & STRIPPING	4,146	€2,170	2.818
F21B	OTH CIRCULATORY SYS PR, INTC	10	€3,499	4.544
F21C	OTH CIRCULATORY SYS PR, MINC	12	€2,924	3.796
F41B	CRC DSRD+AMI+INVA INV PR, MINC	54	€1,730	2.247
F42A	CIRC DIS-AMI+INVA INV PR, MAJC	378	€1,548	2.010
F42B	CIRC DIS-AMI+INVA INV PR, MINC	9,111	€1,504	1.953
F60A	CIRC DIS+AMI-INVA INV PR	6	€580	0.753
F60B	CIRC DIS+AMI-INVA INV PR,T<5D	10	€494	0.642
F61A	INFECTIVE ENDOCARDITIS, MAJC	10	€799	1.038



DRG	DRG Description	Indicative Day Cases	Day Case Price	Day Case RV
F61B	INFECTIVE ENDOCARDITIS, MINC	10	€758	0.984
F62A	HEART FAILURE & SHOCK, MAJC	< 5	€422	0.548
F62B	HEART FAILURE & SHOCK, MINC	178	€412	0.535
F62C	HEART FAILURE & SHOCK, TR<5D	< 5	€412	0.535
F63A	VENOUS THROMBOSIS, MAJC	5	€398	0.517
F63B	VENOUS THROMBOSIS, MINC	64	€373	0.484
F64A	SKN ULCERS IN CIRC DIS, MAJC	< 5	€525	0.681
F64B	SKN ULCERS IN CIRC DIS, INTC	57	€525	0.681
F64C	SKN ULCERS IN CIRC DIS, MINC	12	€406	0.527
F65A	PERIPHERAL VASCULAR DIS, MAJC	40	€776	1.008
F65B	PERIPHERAL VASCULAR DIS, MINC	974	€755	0.981
F66A	CORONARY ATHEROSCLEROSIS, MAJC	32	€638	0.828
F66B	CORONARY ATHEROSCLEROSIS, MINC	636	€627	0.814
F67A	HYPERTENSION, MAJC	8	€484	0.628
F67B	HYPERTENSION, MINC	145	€345	0.447
F68A	CONGENITAL HEART DISEASE, MAJC	441	€597	0.776
F68B	CONGENITAL HEART DISEASE, MINC	419	€578	0.751
F69A	VALVULAR DISORDERS, MAJC	46	€890	1.156
F69B	VALVULAR DISORDERS, MINC	871	€890	1.156
F72B	UNSTABLE ANGINA, MINC	23	€400	0.520
F73A	SYNCOPE & COLLAPSE, MAJC	55	€543	0.705
F73B	SYNCOPE & COLLAPSE, MINC	2,508	€427	0.555
F74A	CHEST PAIN, MAJC	45	€482	0.625
F74B	CHEST PAIN, MINC	658	€471	0.612
F75A	OTHER CIRCULATORY DIS, MAJC	< 5	€909	1.180
F75B	OTHER CIRCULATORY DIS, INTC	46	€890	1.156
F75C	OTHER CIRCULATORY DIS, MINC	666	€882	1.145
F76A	ARRHY,CARD ARRST&COND DIS,MAJC	98	€637	0.827
F76B	ARRHY,CARD ARRST&COND DIS,MINC	2,135	€637	0.827
<b>MDC 06 - DISEASES AND DISORDERS OF THE DIGESTIVE SYSTEM</b>				
G01C	RECTAL RESECTION, MINC	< 5	€11,818	15.346
G02B	MJR SMALL&LARGE BOWEL PR, INTC	< 5	€10,553	13.702
G02C	MJR SMALL&LARGE BOWEL PR, MINC	46	€7,928	10.294
G03B	STOMCH,OESH PGL&DUODNL PR, INTC	14	€10,473	13.598
G03C	STOMCH,OESH PGL&DUODNL PR, MINC	42	€6,382	8.286
G04B	PERITONEAL ADHESOLYSIS, INTC	< 5	€6,366	8.266
G04C	PERITONEAL ADHESOLYSIS, MINC	82	€5,448	7.074
G05B	MNR SMALL&LARGE BOWEL PR, MINC	21	€5,514	7.160
G07A	APPENDICECTOMY, MAJC	< 5	€4,732	6.144
G07B	APPENDICECTOMY, MINC	38	€4,496	5.838

DRG	DRG Description	Indicative Day Cases	Day Case Price	Day Case RV
G10A	HERNIA PROCEDURES, MAJC	56	€5,992	7.780
G10B	HERNIA PROCEDURES, MINC	3,212	€4,039	5.244
G11A	ANAL & STOMAL PROCEDURES, MAJC	43	€3,733	4.847
G11B	ANAL & STOMAL PROCEDURES, MINC	1,447	€2,285	2.967
G12B	OTH DIGESTIVE SYS OR PR, INTC	19	€2,894	3.757
G12C	OTH DIGESTIVE SYS OR PR, MINC	236	€2,722	3.534
G46A	COMPLEX ENDOSCOPY, MAJC	557	€1,386	1.799
G46B	COMPLEX ENDOSCOPY, MINC	12,715	€1,030	1.338
G47A	GASTROSCOPY, MAJC	177	€791	1.027
G47B	GASTROSCOPY, INTC	2,018	€788	1.023
G47C	GASTROSCOPY, MINC	37,866	€545	0.707
G48A	COLONOSCOPY, MAJC	2,388	€947	1.230
G48B	COLONOSCOPY, MINC	51,505	€818	1.063
G60A	DIGESTIVE MALIGNANCY, MAJC	260	€766	0.995
G60B	DIGESTIVE MALIGNANCY, MINC	2,284	€756	0.982
G61A	GASTROINT HAEMORRHAGE, MAJC	20	€447	0.581
G61B	GASTROINT HAEMORRHAGE, MINC	500	€426	0.553
G64A	INFLAM BOWEL DISEASE, MAJC	234	€2,370	3.077
G64B	INFLAM BOWEL DISEASE, MINC	16,840	€2,165	2.811
G65A	GASTROINT OBSTRUCTION, MAJC	< 5	€522	0.678
G65B	GASTROINT OBSTRUCTION, MINC	11	€522	0.678
G66A	ABDMNL PAIN/MESENT ADNTS, MAJC	143	€554	0.719
G66B	ABDMNL PAIN/MESENT ADNTS, MINC	937	€514	0.667
G67A	OESOPHS & GASTROENTS, MAJC	50	€462	0.599
G67B	OESOPHS & GASTROENTS, MINC	805	€397	0.516
G70A	OTHER DIGESTIVE SYS DIS, MAJC	1,239	€768	0.997
G70B	OTHER DIGESTIVE SYS DIS, MINC	5,289	€694	0.902
<b>MDC 07 - DISEASES AND DISORDERS OF THE HEPATOBILIARY SYSTEM AND PANCREAS</b>				
H01B	PANCREAS,LIVER&SHUNT PR, INTC	7	€13,627	17.694
H01C	PANCREAS,LIVER&SHUNT PR, MINC	8	€7,062	9.170
H02A	MJR BILIARY TRACT PR, MAJC	< 5	€5,314	6.900
H02B	MJR BILIARY TRACT PR, MINC	30	€3,321	4.312
H05A	HEPATOBILIARY DIAG PR, MAJC	9	€5,819	7.556
H05B	HEPATOBILIARY DIAG PR, MINC	30	€2,178	2.828
H06B	OTH HEPTOBILRY&PANCRS PR, INTC	9	€1,724	2.239
H06C	OTH HEPTOBILRY&PANCRS PR, MINC	12	€857	1.113
H07A	OPEN CHOLECYSTECTOMY, MAJC	< 5	€7,324	9.509
H07C	OPEN CHOLECYSTECTOMY, MINC	12	€6,660	8.648
H08A	LAP CHOLECYSTECTOMY, MAJC	15	€6,022	7.820
H08B	LAP CHOLECYSTECTOMY, MINC	1,582	€6,141	7.974

DRG	DRG Description	Indicative Day Cases	Day Case Price	Day Case RV
H40B	ENDO PR BLEED OES VARICES,INTC	5	€1,403	1.822
H40C	ENDO PR BLEED OES VARICES,MINC	35	€1,284	1.667
H43A	ERCP PROCEDURES, MAJC	8	€1,567	2.034
H43B	ERCP PROCEDURES, INTC	232	€1,400	1.817
H43C	ERCP PROCEDURES, MINC	1,787	€1,286	1.670
H60A	CIRRHOSIS&ALC HEPATITIS, MAJC	< 5	€852	1.107
H60B	CIRRHOSIS&ALC HEPATITIS, INTC	143	€554	0.719
H60C	CIRRHOSIS&ALC HEPATITIS, MINC	215	€381	0.494
H61A	MALG HEPATOBIL SYS&PANCR, MAJC	26	€748	0.971
H61B	MALG HEPATOBIL SYS&PANCR, MINC	858	€748	0.971
H62A	PANCREAS DIS -MALIG, MAJC	< 5	€717	0.932
H62B	PANCREAS DIS -MALIG, MINC	409	€695	0.903
H63A	OTH DISORDERS OF LIVER, MAJC	24	€621	0.807
H63B	OTH DISORDERS OF LIVER, INTC	443	€594	0.772
H63C	OTH DISORDERS OF LIVER, MINC	1,869	€543	0.705
H64A	BILIARY TRACT DISORDERS, MAJC	122	€641	0.832
H64B	BILIARY TRACT DISORDERS, MINC	608	€641	0.832
<b>MDC 08 - DISEASES AND DISORDERS OF THE MUSCULOSKELETAL SYSTEM &amp; CONNECTIVE TISSUE</b>				
I02B	MCRVAS TT/SKIN GRAFT-HAND,INTC	14	€11,871	15.414
I02C	MCRVAS TT/SKIN GRAFT-HAND,MINC	22	€7,759	10.075
I03B	HIP REPLACEMENT, MINC	11	€5,756	7.474
I04B	KNEE REPLACEMENT, MINC	< 5	€8,383	10.885
I05B	OTHER JOINT REPLACEMENT, MINC	9	€8,357	10.852
I06Z	SPINAL FUSION FOR DEFORMITY	41	€17,687	22.965
I08A	OTHER HIP & FEMUR PR, MAJC	< 5	€6,449	8.374
I08B	OTHER HIP & FEMUR PR, MINC	41	€4,410	5.725
I09B	SPINAL FUSION, INTC	< 5	€10,517	13.656
I09C	SPINAL FUSION, MINC	< 5	€10,517	13.656
I10A	OTHER BACK & NECK PR, MAJC	< 5	€5,288	6.867
I10B	OTHER BACK & NECK PR, MINC	1,096	€4,365	5.668
I11Z	LIMB LENGTHENING PROCEDURES	6	€5,897	7.657
I12B	MISC PR INFC/INFM BNE/JNT,INTC	11	€5,552	7.209
I12C	MISC PR INFC/INFM BNE/JNT,MINC	115	€3,729	4.842
I13A	HUMER,TIBIA,FIBUL,ANKL PR,MAJC	7	€6,704	8.705
I13B	HUMER,TIBIA,FIBUL,ANKL PR,MINC	303	€4,958	6.437
I15A	CRANIO-FACIAL SURGERY, MAJC	< 5	€8,367	10.864
I16Z	OTHER SHOULDER PROCEDURES	274	€4,406	5.721
I17A	MAXILLO-FACIAL SURGERY, MAJC	5	€6,217	8.072
I17B	MAXILLO-FACIAL SURGERY, MINC	8	€3,986	5.175
I18A	OTHER KNEE PROCEDURES, MAJC	115	€3,998	5.191

DRG	DRG Description	Indicative Day Cases	Day Case Price	Day Case RV
I18B	OTHER KNEE PROCEDURES, MINC	1,457	€2,984	3.875
I19A	OTHER ELBOW & FOREARM PR, MAJC	8	€5,294	6.874
I19B	OTHER ELBOW & FOREARM PR, MINC	608	€3,865	5.018
I20A	OTHER FOOT PROCEDURES, MAJC	14	€5,211	6.766
I20B	OTHER FOOT PROCEDURES, MINC	403	€3,702	4.807
I21Z	LOC EX&REM INT FIX DEV HP&FMR	79	€3,147	4.086
I23A	LOC EX&REM INT DEV-HP&FMR,MAJC	124	€3,812	4.950
I23B	LOC EX&REM INT DEV-HP&FMR,MINC	2,060	€1,948	2.529
I24A	ARTHROSCOPY, MAJC	38	€3,654	4.745
I24B	ARTHROSCOPY, MINC	362	€2,391	3.105
I25A	BONE&JNT DIAG PR INC BIOP,MAJC	24	€1,722	2.236
I25B	BONE&JNT DIAG PR INC BIOP,MINC	154	€1,112	1.444
I27A	SOFT TISSUE PROCEDURES, MAJC	13	€5,098	6.619
I27B	SOFT TISSUE PROCEDURES, MINC	668	€2,268	2.945
I28A	OTH MUSCULOSKELETAL PR, MAJC	< 5	€4,232	5.495
I28B	OTH MUSCULOSKELETAL PR, INTC	155	€4,232	5.495
I28C	OTH MUSCULOSKELETAL PR, MINC	128	€2,240	2.909
I29Z	KNEE RECONSTRUCTION/REVISION	102	€6,192	8.040
I30Z	HAND PROCEDURES	2,064	€2,896	3.760
I40Z	INFUSION FOR MUSCLSKLT DIS, SD	36,873	€1,084	1.407
I81Z	MUSCULOSKELETAL INJURIES, SD	788	€874	1.135
I82Z	OTH SD TREATMT, MUSCLSKL DIS	13,956	€611	0.793
<b>MDC 09 - DISEASES AND DISORDERS OF THE SKIN, SUBCUTANEOUS TISSUE AND BREAST</b>				
J06A	MAJOR PR FOR BREAST DIS, MAJC	46	€5,394	7.004
J06B	MAJOR PR FOR BREAST DIS, MINC	1,224	€4,746	6.162
J07A	MINOR PR FOR BREAST DIS, MAJC	812	€2,510	3.259
J07B	MINOR PR FOR BREAST DIS, MINC	1,242	€2,334	3.030
J08A	OTH SKN GRF& DBRDMNT PR, MAJC	< 5	€5,394	7.004
J08B	OTH SKN GRF& DBRDMNT PR, INTC	37	€3,903	5.068
J08C	OTH SKN GRF& DBRDMNT PR, MINC	1,443	€1,844	2.395
J09Z	PERIANAL & PILONIDAL PROCS	483	€3,009	3.907
J10A	SKN,TIS&BRST PLASTIC PR, MAJC	109	€3,410	4.427
J10B	SKN,TIS&BRST PLASTIC PR, MINC	1,082	€1,935	2.513
J11A	OTH SKN,SUBC TIS&BRST PR, MAJC	1,579	€1,283	1.666
J11B	OTH SKN,SUBC TIS&BRST PR, MINC	35,707	€678	0.881
J12A	LWR LMB PR +ULC/CEL, MAJC	< 5	€4,190	5.441
J12B	LWR LMB PR +ULC/CEL, MINC	23	€3,151	4.091
J13A	LWR LMB PR -ULC/CEL, MAJC	10	€3,993	5.185
J13B	LWR LMB PR -ULC/CEL, MINC	149	€2,509	3.258
J14Z	MAJOR BREAST RECONSTRUCTIONS	28	€15,632	20.297

DRG	DRG Description	Indicative Day Cases	Day Case Price	Day Case RV
J60A	SKIN ULCERS, MAJC	6	€521	0.677
J60B	SKIN ULCERS, INTC	21	€382	0.496
J60C	SKIN ULCERS, MINC	968	€119	0.154
J62A	MALIGNANT BREAST DIS, MAJC	42	€802	1.042
J62B	MALIGNANT BREAST DIS, MINC	5,091	€644	0.836
J63A	NON-MALIGNANT BREAST DIS, MAJC	185	€502	0.652
J63B	NON-MALIGNANT BREAST DIS, MINC	3,179	€490	0.637
J64A	CELLULITIS, MAJC	22	€566	0.735
J64B	CELLULITIS, MINC	662	€446	0.579
J65B	TRAUMA TO SKN,SUB TIS&BST,MINC	72	€495	0.643
J67A	MINOR SKIN DISORDERS, MAJC	623	€542	0.703
J67B	MINOR SKIN DISORDERS, MINC	13,280	€538	0.698
J68A	MAJOR SKIN DISORDERS, MAJC	639	€819	1.063
J68B	MAJOR SKIN DISORDERS, MINC	1,665	€304	0.395
J69A	SKIN MALIGNANCY, MAJC	28	€1,292	1.677
J69B	SKIN MALIGNANCY, INTC	501	€853	1.107
J69C	SKIN MALIGNANCY, MINC	2,309	€494	0.642
J98Z	UV THERAPY	20,223	€123	0.160
<b>MDC 10 - ENDOCRINE, NUTRITIONAL AND METABOLIC DISEASES AND DISORDERS</b>				
K01B	OR PR FOR DIABETIC COMPL, INTC	< 5	€4,525	5.876
K01C	OR PR FOR DIABETIC COMPL, MINC	< 5	€4,112	5.339
K03Z	ADRENAL PROCEDURES	< 5	€8,753	11.365
K05B	PARATHYROID PROCEDURES, MINC	19	€5,706	7.409
K06B	THYROID PROCEDURES, MINC	23	€6,520	8.466
K08Z	THYROGLOSSAL PROCEDURES	7	€3,449	4.479
K09A	OTH ENDCRN,NUTR&METAB PR, MAJC	< 5	€5,447	7.073
K09B	OTH ENDCRN,NUTR&METAB PR, MINC	67	€3,514	4.563
K12A	OTHER BARIATRIC PROCS, MAJC	< 5	€5,402	7.014
K12B	OTHER BARIATRIC PROCS, MINC	< 5	€5,402	7.014
K13Z	PLAS OR PROC - END,NUT,MET DIS	14	€5,892	7.650
K40A	ENDO&INVEST PR METAB DIS, MAJC	24	€933	1.211
K40B	ENDO&INVEST PR METAB DIS, MINC	1,028	€869	1.128
K60A	DIABETES, MAJC	< 5	€519	0.674
K60B	DIABETES, MINC	253	€195	0.253
K61B	SEV NUTRIT DISTURBANCE, MINC	< 5	€481	0.624
K62A	MISC METABOLIC DISORDERS, MAJC	19	€483	0.628
K62B	MISC METABOLIC DISORDERS, INTC	145	€479	0.622
K62C	MISC METABOLIC DISORDERS, MINC	1,726	€479	0.622
K63A	INBORN ERR OF METABOLISM, MAJC	297	€1,070	1.389
K63B	INBORN ERR OF METABOLISM, MINC	371	€514	0.668

DRG	DRG Description	Indicative Day Cases	Day Case Price	Day Case RV
K64A	ENDOCRINE DISORDERS, MAJC	663	€464	0.602
K64B	ENDOCRINE DISORDERS, MINC	2,396	€414	0.537
<b>MDC 11 - DISEASES AND DISORDERS OF THE KIDNEY AND URINARY TRACT</b>				
L02A	OP INS PERI CTH DIALYSIS, MAJC	< 5	€2,589	3.362
L02B	OP INS PERI CTH DIALYSIS, MINC	45	€2,284	2.966
L03B	KDNY,URT&MJR BLDR PR NPSM,INTC	< 5	€9,229	11.983
L03C	KDNY,URT&MJR BLDR PR NPSM,MINC	14	€9,229	11.983
L04B	KDY,URT&MJR BLDR PR N-NPM,INTC	46	€3,783	4.913
L04C	KDY,URT&MJR BLDR PR N-NPM,MINC	760	€3,283	4.263
L05B	TRANSURTH PROSTM,URI DIS,MINC	< 5	€3,803	4.938
L06A	MINOR BLADDER PROCEDURES, MAJC	< 5	€5,040	6.544
L06B	MINOR BLADDER PROCEDURES, INTC	11	€3,122	4.054
L06C	MINOR BLADDER PROCEDURES, MINC	103	€2,202	2.859
L07A	OTH TRANSURETHRAL PROCS, MAJC	7	€3,069	3.986
L07B	OTH TRANSURETHRAL PROCS, MINC	691	€2,049	2.660
L08A	URETHRAL PROCEDURES, MAJC	< 5	€4,002	5.196
L08B	URETHRAL PROCEDURES, MINC	62	€3,352	4.352
L09B	OTH PR KIDNY&URNRY TR DIS,INTC	7	€3,682	4.781
L09C	OTH PR KIDNY&URNRY TR DIS,MINC	288	€3,682	4.781
L40Z	URETEROSCOPY	79	€1,903	2.471
L41Z	CYSTOURETHROSCOPY URI DIS, SD	11,887	€481	0.625
L42Z	ESW LITHOTRIPSY	2,129	€515	0.669
L60B	KIDNEY FAILURE, INTC	109	€811	1.053
L60C	KIDNEY FAILURE, MINC	639	€733	0.952
L61Z	HAEMODIALYSIS	175,258	€497	0.646
L62A	KDNY&UNRY TR NEOPLASMS, MAJC	27	€799	1.037
L62B	KDNY&UNRY TR NEOPLASMS, MINC	939	€627	0.814
L63A	KDNY&UNRY TR INFECTIONS, MAJC	34	€524	0.681
L63B	KDNY&UNRY TR INFECTIONS, MINC	1,356	€307	0.399
L64A	URINARY STONES & OBSTR, MAJC	104	€981	1.274
L64B	URINARY STONES & OBSTR, MINC	303	€537	0.698
L65A	KDNY&UNRY TR SGNS&SYMPS, MAJC	40	€493	0.641
L65B	KDNY&UNRY TR SGNS&SYMPS, MINC	2,554	€221	0.287
L66Z	URETHRAL STRICTURE	220	€458	0.595
L67A	OTH KIDNY&URNRY TRCT DIS, MAJC	460	€665	0.864
L67B	OTH KIDNY&URNRY TRCT DIS, INTC	2,622	€540	0.701
L67C	OTH KIDNY&URNRY TRCT DIS, MINC	3,317	€351	0.455
L68Z	PERITONEAL DIALYSIS	< 5	€1,136	1.474
<b>MDC 12 - DISEASES AND DISORDERS OF THE MALE REPRODUCTIVE SYSTEM</b>				
M01B	MAJOR MALE PELVIC PROCS, MINC	< 5	€9,128	11.852

DRG	DRG Description	Indicative Day Cases	Day Case Price	Day Case RV
M02B	TRANSURTH PROSTMY,REP DIS,MINC	5	€3,522	4.573
M03A	PENIS PROCEDURES, MAJC	30	€4,443	5.769
M03B	PENIS PROCEDURES, MINC	372	€2,550	3.311
M04Z	TESTES PROCEDURES	1,319	€2,963	3.847
M05Z	CIRCUMCISION	1,843	€2,163	2.809
M06A	OTH MALE REPROD SYS OR PR,MAJC	62	€2,035	2.643
M06B	OTH MALE REPROD SYS OR PR,MINC	159	€1,940	2.519
M40Z	CYSTURTHRSCPY,MALE REPR DIS,SD	2,122	€352	0.456
M60A	MALE REPR SYS MALIG, MAJC	315	€810	1.051
M60B	MALE REPR SYS MALIG, MINC	3,634	€753	0.978
M61A	BENIGN PROSTATIC HYPERTR, MAJC	30	€662	0.859
M61B	BENIGN PROSTATIC HYPERTR, MINC	864	€275	0.357
M62A	MALE REPROD SYS INFLAMM, MAJC	< 5	€598	0.776
M62B	MALE REPROD SYS INFLAMM, MINC	620	€458	0.595
M63Z	MALE STERILISATION PROCS	144	€2,057	2.671
M64A	OTHER MALE REPROD SYS DIS,MAJC	23	€944	1.225
M64B	OTHER MALE REPROD SYS DIS,MINC	598	€888	1.153
<b>MDC 13 - DISEASES AND DISORDERS OF THE FEMALE REPRODUCTIVE SYSTEM</b>				
N04B	HYSTERECTOMY FOR N-MAL, MINC	7	€5,981	7.766
N05A	OOPH&COM FAL TBE PR N-MAL,MAJC	< 5	€6,294	8.173
N05B	OOPH&COM FAL TBE PR N-MAL,MINC	214	€4,417	5.736
N06B	FEM REP SYS RECON PROC, MINC	104	€3,364	4.368
N07A	OTH UTRS & ADN PR N-MAL, MAJC	1,097	€3,329	4.323
N07B	OTH UTRS & ADN PR N-MAL, MINC	2,264	€2,264	2.939
N08Z	ENDOS & LAPAR PR, FEM REPR SYS	766	€2,576	3.345
N09Z	OTH VAGINA,CERVIX&VULVA PROCS	1,996	€1,427	1.853
N10Z	DXC CURETTGE, DXC HYSTEROSCOPY	9,136	€1,344	1.745
N11A	OTH FEM REPROD SYS PR, MAJC	18	€4,641	6.027
N11B	OTH FEM REPROD SYS PR, MINC	15	€1,611	2.091
N12B	UTERUS & ADNEXA PR MALIG, INTC	5	€7,812	10.144
N12C	UTERUS & ADNEXA PR MALIG, MINC	50	€7,500	9.739
N60A	FEMALE REPROD SYS MALIG, MAJC	16	€877	1.139
N60B	FEMALE REPROD SYS MALIG, MINC	869	€705	0.915
N61A	FEM REPROD SYS INFECT, MAJC	< 5	€479	0.623
N61B	FEM REPROD SYS INFECT, MINC	147	€254	0.329
N62A	MNSTRL&OTH FEM REPR DIS, MAJC	70	€489	0.635
N62B	MNSTRL&OTH FEM REPR DIS, MINC	3,499	€384	0.499
<b>MDC 14 - PREGNANCY, CHILDBIRTH AND THE PEURPERIUM</b>				
O03A	ECTOPIC PREGNANCY, MAJC	< 5	€2,828	3.672
O03B	ECTOPIC PREGNANCY, MINC	33	€2,229	2.895

DRG	DRG Description	Indicative Day Cases	Day Case Price	Day Case RV
O04A	POSTPARTUM&POST ABORTN+OR,MAJC	< 5	€2,643	3.432
O04B	POSTPARTUM&POST ABORTN+OR,MINC	24	€1,904	2.472
O05Z	ABORTION WITH OR PROCEDURES	1,452	€1,691	2.196
O61A	POSTPART&POST ABORTN -OR, MAJC	19	€632	0.820
O61B	POSTPART&POST ABORTN -OR, MINC	1,202	€209	0.271
O63A	ABORTION W/O OR PROCS, MAJC	13	€539	0.700
O63B	ABORTION W/O OR PROCS, MINC	420	€471	0.612
O66A	ANTENATAL&OTH OBS ADM, MAJC	1,530	€1,065	1.383
O66B	ANTENATAL&OTH OBS ADM, MINC	7,747	€369	0.479
<b>MDC 15 - NEWBORNS AND OTHER NEONATES</b>				
P01Z	NEONATE W SIG OR/VENT, D/TR<=5D	< 5	€1,949	2.531
P06B	NEO,ADMWT >=2500G+OR/VENT,MINC	< 5	€1,089	1.414
P61Z	NEONATE, ADMWT <750G -OR PR	6	€1,113	1.446
P66C	NEO,ADMWT 2000-2499G-OR/V,INTC	< 5	€789	1.024
P66D	NEO,ADMWT 2000-2499G-OR/V,MINC	20	€789	1.024
P67A	NEO,WT>=2500G-OR/V,<37WKS,EXTC	< 5	€932	1.210
P67B	NEO,WT>=2500G-OR/V,<37WKS,MAJC	< 5	€932	1.210
P67C	NEO,WT>=2500G-OR/V,<37WKS,INTC	< 5	€932	1.210
P67D	NEO,WT>=2500G-OR/V,<37WKS,MINC	18	€932	1.210
P68A	NEO,W>=2500G-OR/V,>=37WKS,EXTC	10	€1,139	1.478
P68B	NEO,W>=2500G-OR/V,>=37WKS,MAJC	28	€1,139	1.478
P68C	NEO,W>=2500G-OR/V,>=37WKS,INTC	93	€855	1.110
P68D	NEO,W>=2500G-OR/V,>=37WKS,MINC	352	€586	0.762
<b>MDC 16 - DISEASES AND DISORDERS OF THE BLOOD AND BLOOD FORMING ORGANS AND IMMUNOLOGICAL DISORDERS</b>				
Q02A	BLD&IMM SYS DIS+OTH OR PR,MAJC	< 5	€3,071	3.987
Q02B	BLD&IMM SYS DIS+OTH OR PR,MINC	467	€1,268	1.647
Q60A	RETICLENDO&IMMUNITY DIS, MAJC	492	€1,110	1.442
Q60B	RETICLENDO&IMMUNITY DIS, MINC	4,340	€1,098	1.425
Q61A	RED BLOOD CELL DISORDERS, MAJC	896	€1,050	1.363
Q61B	RED BLOOD CELL DISORDERS, INTC	14,231	€743	0.965
Q61C	RED BLOOD CELL DISORDERS, MINC	22,189	€255	0.331
Q62A	COAGULATION DISORDERS, MAJC	80	€1,803	2.342
Q62B	COAGULATION DISORDERS, MINC	3,265	€1,528	1.985
<b>MDC 17 - NEOPLASTIC DISORDERS (HAEMATOLOGICAL AND SOLID NEOPLASMS)</b>				
R01A	LYMPHMA&LEUKMA+MJR OR PR, MAJC	< 5	€7,399	9.608
R01B	LYMPHMA&LEUKMA+MJR OR PR, MINC	20	€4,263	5.536
R02B	OTH NPLSTC DIS+MJR OR PR, INTC	< 5	€7,299	9.478
R02C	OTH NPLSTC DIS+MJR OR PR, MINC	39	€4,960	6.441
R03B	LYMPHMA&LEUKMA+OTH OR PR, INTC	5	€3,309	4.296
R03C	LYMPHMA&LEUKMA+OTH OR PR, MINC	163	€2,270	2.947



DRG	DRG Description	Indicative Day Cases	Day Case Price	Day Case RV
R04A	OTH NPLSTC DIS+OTH OR PR, MAJC	26	€3,378	4.387
R04B	OTH NPLSTC DIS+OTH OR PR, MINC	918	€2,783	3.613
R60A	ACUTE LEUKAEMIA, MAJC	90	€1,370	1.778
R60B	ACUTE LEUKAEMIA, MINC	2,705	€1,210	1.571
R61A	LYMPHOMA&N-ACUTE LEUK, MAJC	442	€1,009	1.310
R61B	LYMPHOMA&N-ACUTE LEUK, MINC	10,027	€967	1.255
R62A	OTHER NEOPLASTIC DIS, MAJC	916	€431	0.560
R62B	OTHER NEOPLASTIC DIS, INTC	6,770	€387	0.503
R62C	OTHER NEOPLASTIC DIS, MINC	101,174	€282	0.367
R63Z	CHEMOTHERAPY	118,033	€557	0.723
R99Z	ONCOLOGY REPEAT ATTENDANCE	23,229	€525	0.682
<b>MDC18 - INFECTIOUS AND PARASITIC DISEASES</b>				
S65C	HIV, MINC	41	€1,033	1.342
T01B	INFECT&PARAS DIS +OR PR, INTC	7	€4,869	6.323
T01C	INFECT&PARAS DIS +OR PR, MINC	38	€3,357	4.359
T60B	SEPTICAEMIA, INTC	9	€476	0.618
T60C	SEPTICAEMIA, MINC	8	€476	0.618
T61A	POSTOP&POSTTRAUM INFECT, MAJC	7	€827	1.074
T61B	POSTOP&POSTTRAUM INFECT, MINC	108	€588	0.763
T62A	FEVER OF UNKNOWN ORIGIN, MAJC	< 5	€539	0.700
T62B	FEVER OF UNKNOWN ORIGIN, MINC	39	€447	0.580
T63A	VIRAL ILLNESS, MAJC	113	€764	0.992
T63B	VIRAL ILLNESS, MINC	423	€264	0.343
T64B	OTH INFECT&PARASITIC DIS, INTC	21	€687	0.892
T64C	OTH INFECT&PARASITIC DIS, MINC	493	€592	0.769
<b>MDC 19 - MENTAL DISEASES AND DISORDERS</b>				
U40Z	MENTAL HEALTH TREAT+ECT, SD	46	€604	0.784
U60A	MENTAL HEALTH -ECT, SD, MAJC	421	€575	0.747
U60B	MENTAL HEALTH -ECT, SD, MINC	225	€547	0.710
<b>MDC 20 - ALCOHOL/DRUG USE AND ALCOHOL/DRUG INDUCED ORGANIC MENTAL DISORDERS</b>				
V65Z	TREATMT FOR ALCOHOL DIS, SD	11	€341	0.442
V66Z	TREATMT FOR DRUG DIS, SD	< 5	€303	0.393
<b>MDC 21 - INJURIES, POISONING AND TOXIC EFFECTS OF DRUGS</b>				
X02A	MVSCLR TT/SKN GR INJ HAND,MAJC	< 5	€9,800	12.725
X02B	MVSCLR TT/SKN GR INJ HAND,MINC	13	€4,859	6.309
X04B	OTH PR INJURIES LWR LIMB, MINC	11	€3,049	3.959
X05A	OTH PR FOR INJ TO HAND, MAJC	37	€4,388	5.698
X05B	OTH PR FOR INJ TO HAND, MINC	233	€1,538	1.998
X06A	OTH PR FOR OTH INJURIES, MAJC	< 5	€5,032	6.534
X06B	OTH PR FOR OTH INJURIES, INTC	43	€3,511	4.559

DRG	DRG Description	Indicative Day Cases	Day Case Price	Day Case RV
X06C	OTH PR FOR OTH INJURIES, MINC	222	€1,699	2.206
X07B	SKIN GRAFT, INJ EXCL HAND,INTC	< 5	€6,543	8.496
X07C	SKIN GRAFT, INJ EXCL HAND,MINC	8	€4,045	5.252
X60A	INJURIES, MAJC	9	€672	0.873
X60B	INJURIES, MINC	454	€567	0.736
X61B	ALLERGIC REACTIONS, MINC	7	€494	0.642
X62B	POISON/TOXIC EFF DRUGS, MINC	78	€397	0.516
X63A	SEQUELAE OF TREATMENT, MAJC	20	€793	1.029
X63B	SEQUELAE OF TREATMENT, MINC	304	€713	0.926
X64A	OTH INJ,POIS&TOXIC EFFCTS,MAJC	< 5	€543	0.705
X64B	OTH INJ,POIS&TOXIC EFFCTS,MINC	10	€453	0.588
<b>MDC 22 - BURNS</b>				
Y02A	SKIN GRAFT OTHER BURNS, MAJC	< 5	€6,832	8.871
Y02B	SKIN GRAFT OTHER BURNS, INTC	< 5	€4,196	5.448
Y02C	SKIN GRAFT OTHER BURNS, MINC	5	€3,825	4.966
Y03A	OTH OR PR FOR OTHER BURNS,MAJC	12	€4,005	5.200
Y03B	OTH OR PR FOR OTHER BURNS,MINC	7	€3,004	3.901
Y61Z	SEVERE BURNS	8	€813	1.056
Y62A	OTHER BURNS, MAJC	5	€663	0.861
Y62B	OTHER BURNS, MINC	71	€653	0.848
<b>MDC 23 - FACTORS INFLUENCING HEALTH STATUS AND OTHER CONTACTS WITH HEALTH SERVICES</b>				
Z01A	OTH CNT HLTH SRV +OR PR, MAJC	41	€4,051	5.260
Z01B	OTH CNT HLTH SRV +OR PR, MINC	725	€2,015	2.617
Z40Z	OTH CONTCT HLTH SRV +ENDOSC,SD	15,857	€627	0.814
Z60B	REHABILITATION, MINC	< 5	€236	0.306
Z61A	SIGNS & SYMPTOMS, MAJC	28	€549	0.713
Z61B	SIGNS & SYMPTOMS, INTC	191	€528	0.685
Z61C	SIGNS & SYMPTOMS, MINC	1,057	€491	0.637
Z63A	OTH FLLW UP SURG/MED CARE,MAJC	71	€496	0.644
Z63B	OTH FLLW UP SURG/MED CARE,MINC	1,969	€441	0.573
Z64A	OTH FACTORS INFL HLTH ST, MAJC	3,662	€505	0.656
Z64B	OTH FACTORS INFL HLTH ST, MINC	36,907	€359	0.467
Z65Z	CONGNTL ANML&PROB FR NEO PERD	115	€796	1.034
Z66Z	SLEEP DISORDERS	21	€551	0.715





**H**HEALTHCARE  
**P**PRICING  
**O**FFICE

---